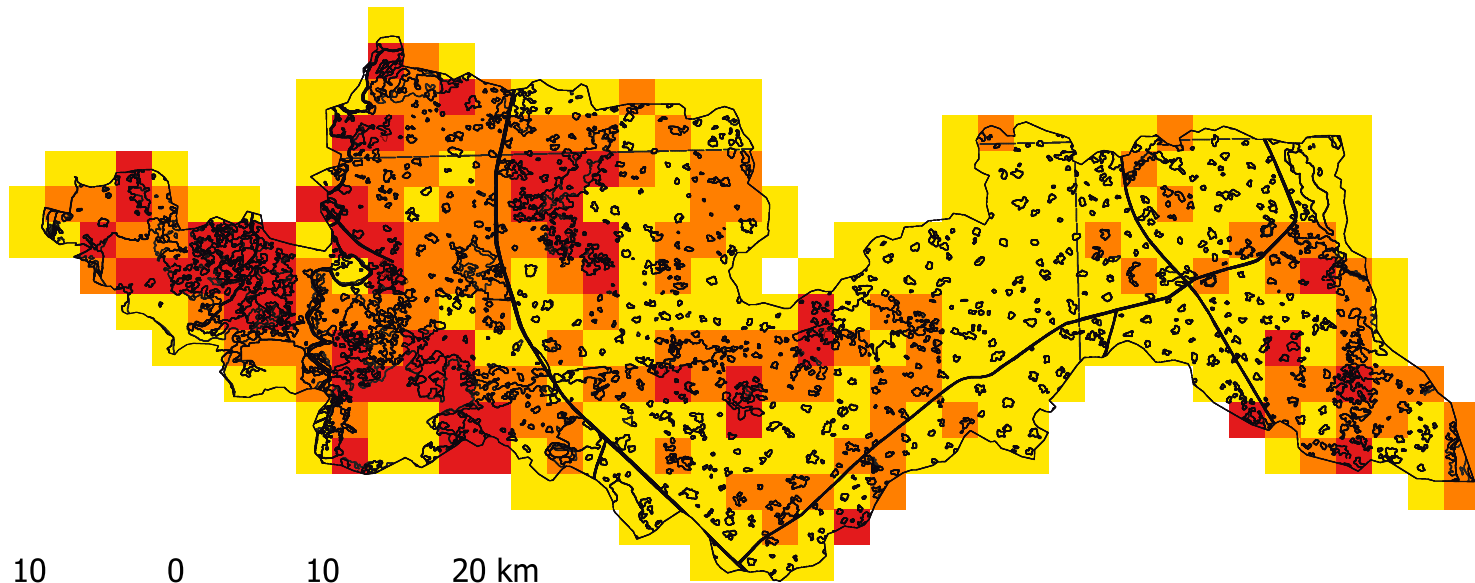


LULC change in Ghaziabad district



Legend

- High Chnage > 10-15%
- Low Change <10%
- No Change <=1%
- Boundaries and lines of Ghaziabad

Map description and Analysis

Description

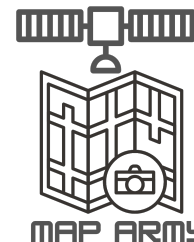
- Above is the map of Ghaziabad District, the metropolitan city of Uttar Pradesh.
- This map can be used to detect the hotspot areas where the maximum change occurred ,the areas with low changes and with no changes.
- We have indicated high change with red color, low change with orange and no change with yellow

Analysis

- We have observed the urban changes over the years. The dataset was from year 2005-06, 2011-12 and 2015-16

Application

- LULC plays a major role in area management and change detection. This map can be used to detect the hotspot areas where the maximum change occurred ,the areas with low changes and with no changes.



Team Name : Map Army

Topic : LULC change with Hotspots using LULC maps from Bhuvan

Team Lead/members: Khushi Yadav, Parth Dogra, Muskaan Mittal, Priyansh Shankhdhar

Contact: khushiyadav9910@gmail.com parthdogra1@gmail.com