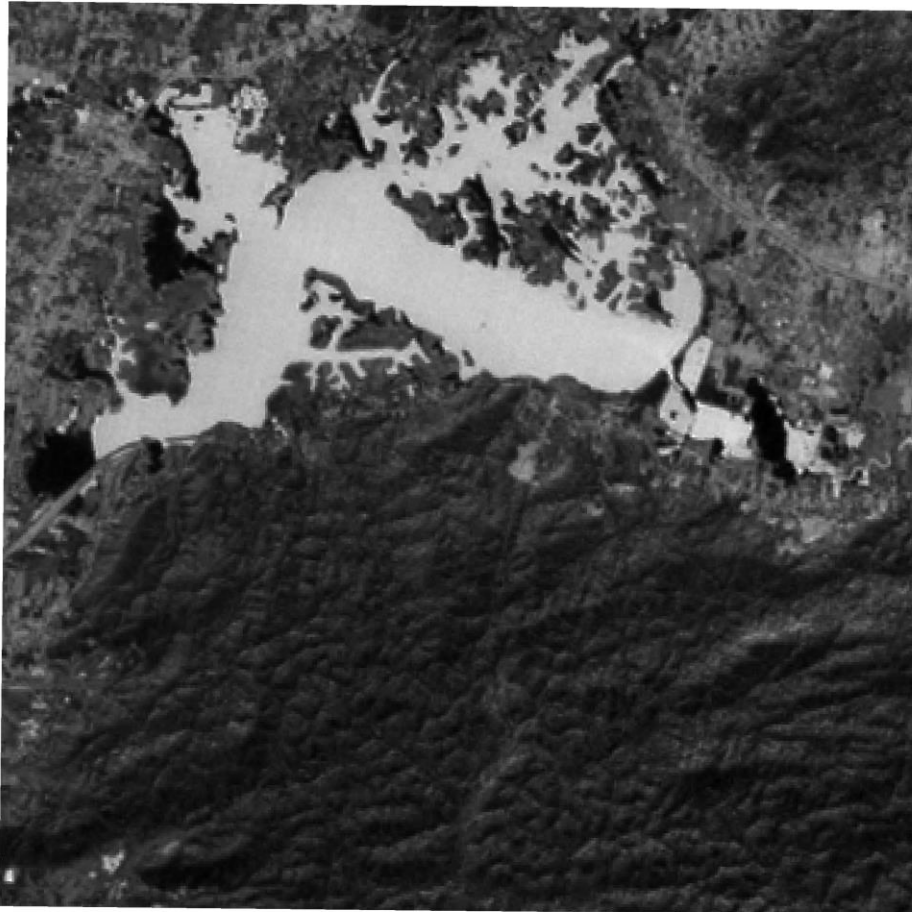


## DEEPOR BEEL, ASSAM NDWI NOVEMBER 2017



### DEEPOR BEEL, ASSAM

NDWI NOVEMBER 2017

■ -0.639752

□ 0.298246

## Map description and analysis

### Introduction:

NDWI (Normalized Difference Water Index) is the method to Highlight the Water Bodies on the Satellite Image. It uses Green and NIR (Near Infrared) Band to calculate the NDWI. The Image shows Deepor Beel Lake in November 2017.

### Green Band:

- It shows the highest reflection of Water Bodies, in a Spectral Signature Curve of Water.
- Other Features have Less Reflectance compared to NIR Band.

### NIR Band:

- It shows the lowest or no reflection of Water Bodies in the Spectral Curve of Water.
- Other Features have High Reflectance compared to Green Band.

### Formula:

- $NDWI = (Green\ Band - NIR\ Band) / (Green\ Band + NIR\ Band)$ .

### Conclusion:

The Map highlights the areas with Water, in this case the Lake. The Bright part in the image shows the value that goes from 0 to +1 and shows the water, and the Dark part in the image shows the value that goes from 0 to -1 and shows the other features than Water.

### Team Members:

Bhola Mahto  
Saurav Deka  
Surabhi Tamang

**Team Name:** BIT Ranchi

**Topic:** Choose Your Own Topic

**Team lead:** Palash Chowdhary

**Organization:** BIT Mesra, Ranchi

**Contact/email:** [palash2907@gmail.com](mailto:palash2907@gmail.com)

0.75 0 0.75 1.5 km

