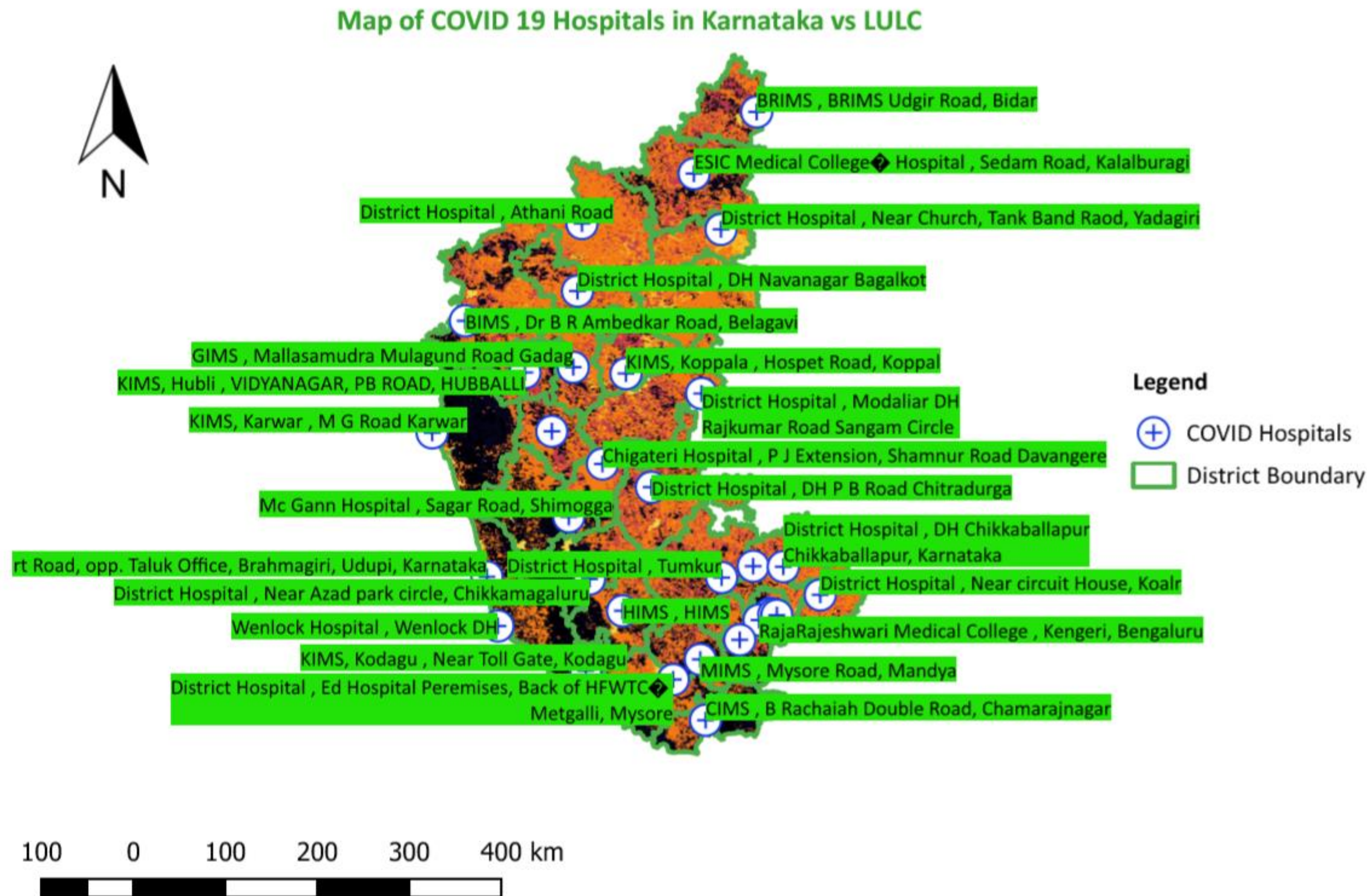


# MAP of COVID Hospital vs Karnataka LULC

## Map description and analysis



### Introduction:

The map gives a brief idea about the LULC and distribution of COVID hospital across Karnataka.

### Karnataka

- Karnataka is one of the south Indian state which contribute more than 7% to the India's GDP.
- COVID 19 pandemic affect badly in Karnataka also.

### COVID in Karnataka

- Total population of Karnataka is around 61.1M. 35% of the total population across 30 districts affected by COVID pandemic.
- The number of COVID hospital in Karnataka is only 33.
- The distribution of hospitals are far away from the many communities.



**Team Name:** mapathon2340

**Topic:** COVID 19 in Karnataka

**Team member/lead:** Vishnu Jayan

**Team members:** Shree Lekshmi, Vishnu Jayan

**Contact/email:** Vishnu.j@iitb.ac.in