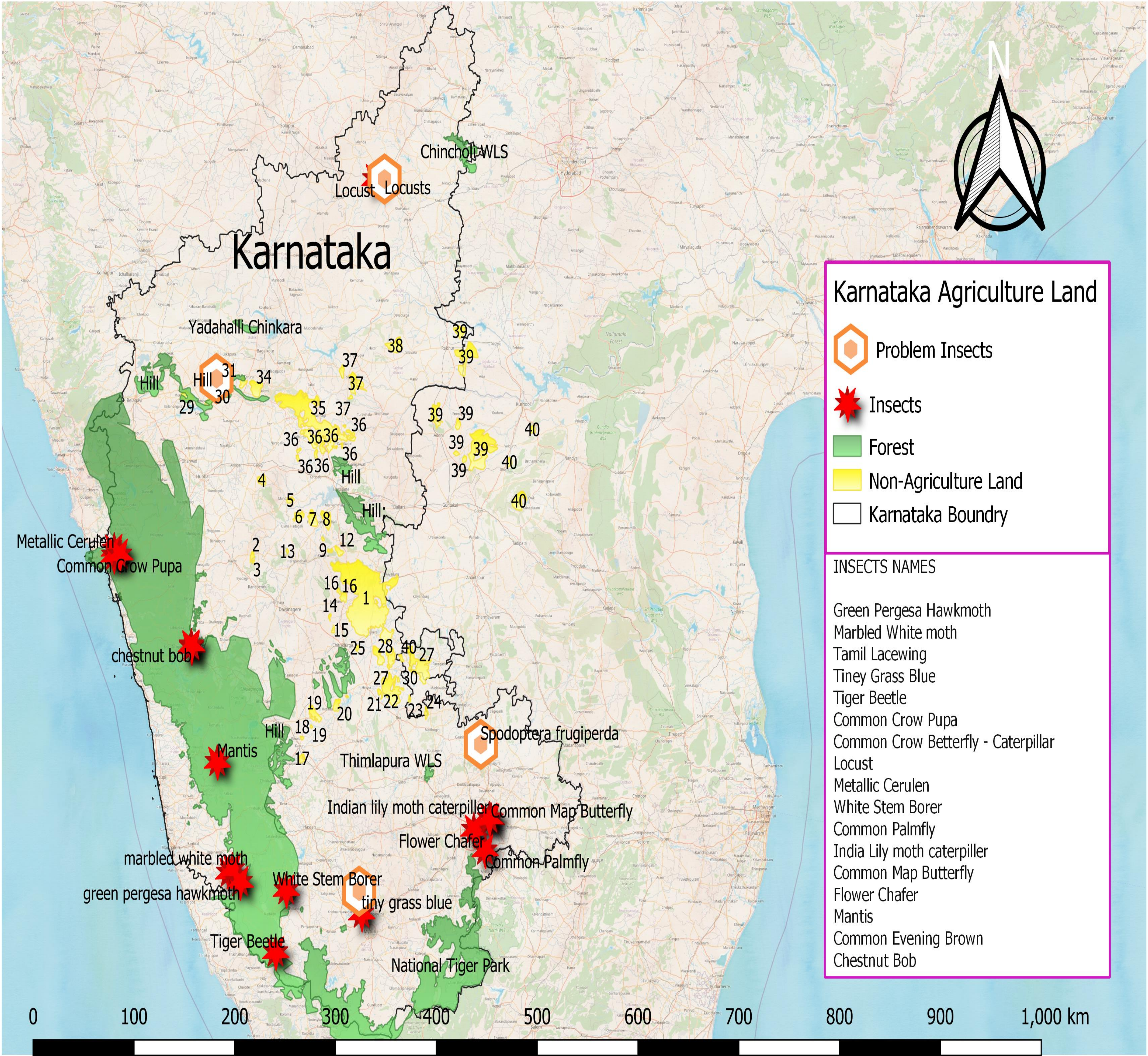


Title: Identifying Insects in Agriculture Land in Karnataka

Map description and analysis



Introduction:

In Karnataka, Agriculture is the major occupation for the rural peoples. A total of 123,100 km² of land is cultivated in Karnataka. The major crop cultivations are Paddy, sugarcane, jowar, cotton, ragi, coffee and Mize

Problems:

Due to the large number of insects attacks large number of crops are dead, causes a heavy economic crises for farmers. Due to some of the insects attacks brings harmful to the plants and also it affects the plant cell and made the as a non edible crops.

The Spodoptera frugiperda also called as fall armyworms injure the early vegetative growth of the Mize crops. The Locusts cause severe economic loss in agriculture for example each locust can eat two grams of crop which is equivalent to its own weight. And also it will not stop to eat a single plant it largely cause infect to paddy, wheat and cotton.

Xylotrechus quadripes (white stem borer) can kill the young plant , it will make the plant dry and made them to die in a year. It mainly damage the coffee plants.

Methodology

- We designed a map based on the government data from bhuvan data spatial.
- We used design tool QGIS 3.16.2 for desktop standalone.
- Indian Boundary map Collected from referenced Mapathon website.
- Installed plugin in QGIS for bhuvan V1,V2 WMS which is used to analysis forest and Non-agri land.
- Insets details collected from Karnataka GIS portal.
- Also, we gathered information from Farmers.



Team Name: MSAJCE (Mapathon 3500)

Topic: Insects in Agriculture

Team member/lead: Dr. I Manju

Organization: Mohamed Sathak AJ College of Engineering

Contact/email: ece.malik@msajce-edu.in