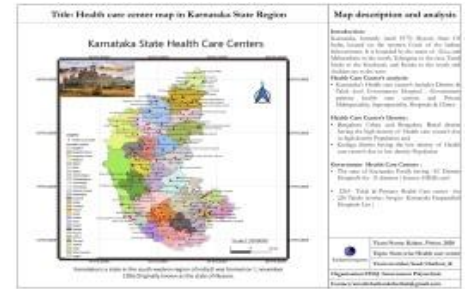


Health Care Center Map of Karnataka



1. Methodology:

- QGIS 3.10 is used to create the above project
- Attribute table of health care centers along with longitude & latitude are made in Microsoft Excel and saved as csv(common delimited)
- Using Bhuvan website for creating Base layer:-
Bhuvan website –Thematic services

Search-

select_Theme-Land use land cover (50k) 2015-16

select state- Karnataka

web services-

web map services (wms) url

copy the below url (ex: <https://bhuvan-vec2.nrsc.gov.in/bhuvan/wms>)

- Open Qgis : open new empty project :- layer:- add layer:-add wms/wmts layer :-new:-name = (map name) :- url=(Paste the copied layer):- ok :-connect :- select the required map (ex:lulc:KA_LULC50K) :- add:-close :- (we get the wms Bhuvan map on the screen)
 - Click on the toggle editing:- select temporary scratch layer :-add layer name and select the geometry type as polygon :- select add polygon layer :- (draw the state boundaries using the reference of the base wms map, after selecting click right button on the mouse to create the state map layer in polygon)
 - To create the district layer
layer:- add layer:-add wms/wmts layer :- (select) Indian district boundaries :- ok
 - (new boundaries layer is rendered) select toggle editing:- Select Split Feature :- :- (split the district boundaries using the reference of the base wms map, after selecting click right button on the mouse to create the district map layer in polygon)
 - To add the location of health care center
(Select):- layer :- add layer:- add vector layer:-copy and paste the attribute table's source :- add
New vector layer open's :- (right click on it) :-properties:- edit sybol and label using sybology and layer section :-apply :- ok
 - To create map : project :- new print layout:- (add name):-
 - Click add items :-add map :-add label :-add picture
 - Add grids ,frame and scale, scale bar
 - After completing click on layout click save ,click export as image /export image as pdf
 - **Complexity**:-working on new interface and collecting the data of more than 1500 hospital list accurately along with longitude and latitude seems to a complicated process in these map's preparation
 - Our desired map is exported to my computer
2. Qgis software is found user friendly and free of cost. using our maps people can access nearest hospital or clinic very easily and ambulance services can get quick access to the nearest hospital

