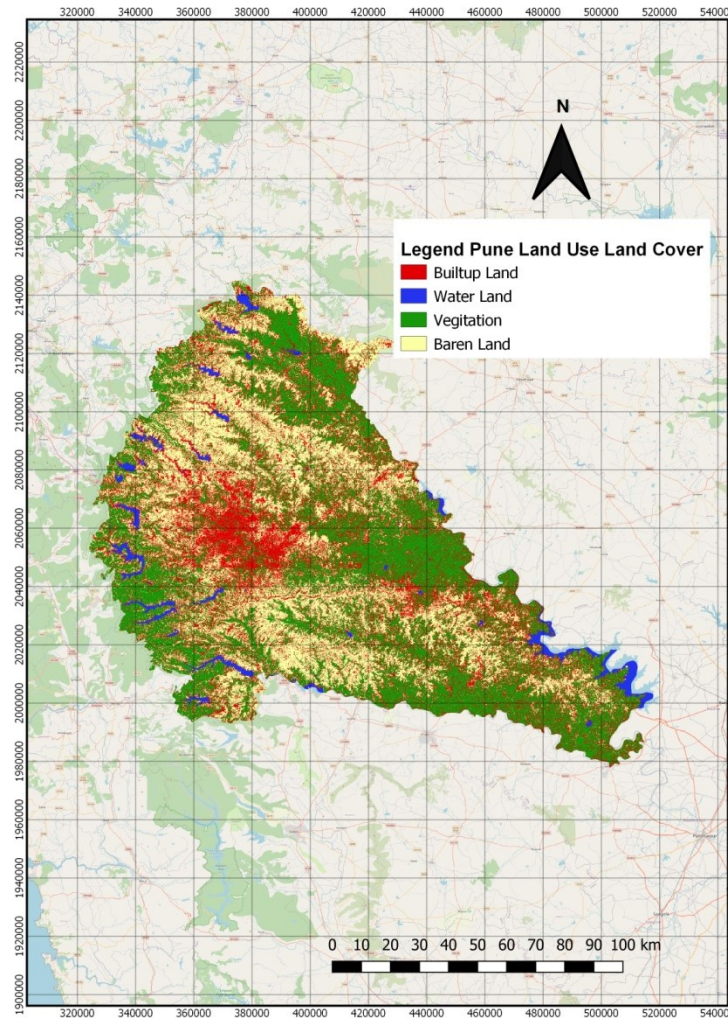


## Title: Land Use and Land Cover map of Pune district



## Map description and analysis

RESOURCESAT LISS-3 datasets were used to derive Land Use Land Cover (LULC) map, Which includes downloading of required toposheets from BHUVAN, SCP Plug-in installation in QGIS, Band set process (Band composition), Band Processing-PCA method to take training sample and do classification, Projection, Resampling and Reclassification. LULC is a more parameter considered for deriving vulnerability type map of flood.

**Team Name:** Gagan

**Topic:** Land Use and Land Cover Map

**Team Member/Lead:** Anjali Jagtap, Ganesh Chavan, Varsha Degaonkar, V Rajesh Chowdhary

**Organization:** Hope Foundation's International Institute of Information Technology, Pune

**Contact/email:** [anjalij@isquareit.edu.in](mailto:anjalij@isquareit.edu.in)

*Data courtesy: BHUVAN, ISRO, FOSSEE, Worldpop*