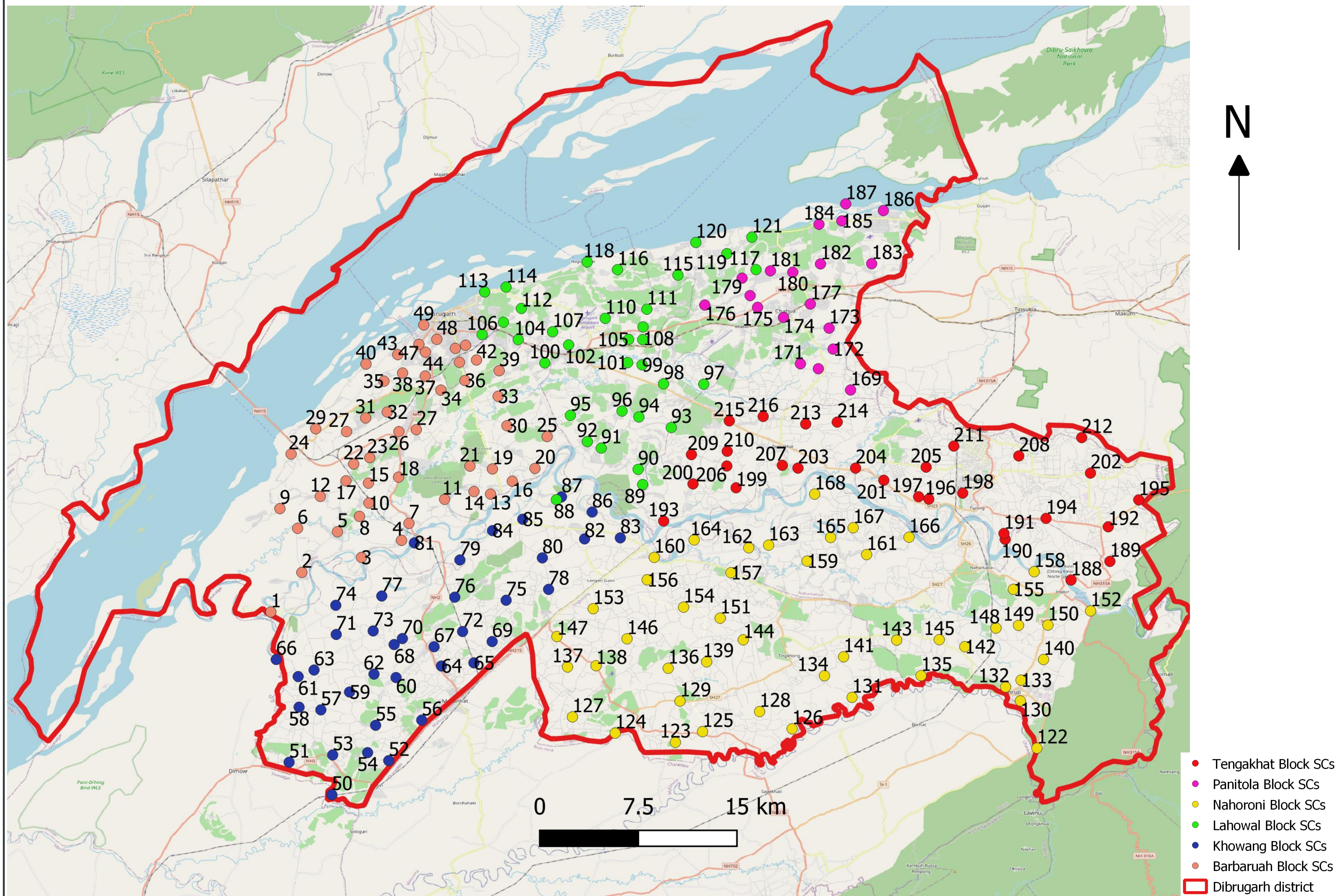


Title: Distribution of Sub-centres in all Health Blocks of Dibrugarh district.

Map description



There are in total 216 Sub-Centres (SCs) in the health blocks of Dibrugarh district.

Map: The map shows distribution of all the Sub-centres of Dibrugarh district .

Note: The codes for the Sub-centres have been enlisted as Sl. Nos. in the subsequent pages.



Team Name: SwasthyaDisha@mapathon

<p>Topic: Health Infrasturcture Mapping of Dibrugarh district</p>
--

Team member/lead: Dr. Jenita Baruah

Organization:

Contact/email: baruahjenita@gmail.com

Sl. No	Subdistrict	SC	Latitude	Longitude
1	Barbaruah BPHC	ITAKHULI SC	27.25085	94.76915
2	Barbaruah BPHC	KOLAKHOWA SC	27.28182	94.79342
3	Barbaruah BPHC	BHOGAMUR SC	27.29355	94.8401
4	Barbaruah BPHC	KOTOHA NA GAON SC	27.30693	94.87157
5	Barbaruah BPHC	LEZAI SC	27.31363	94.8213
6	Barbaruah BPHC	BORDOIBAM SC	27.31632	94.79013
7	Barbaruah BPHC	KOTOHA SC	27.32023	94.87737
8	Barbaruah BPHC	DEWANBARI SC	27.3257	94.83858
9	Barbaruah BPHC	MADHUPUR SC	27.33175	94.77625
10	Barbaruah BPHC	TINISUKIA SC	27.33613	94.84598
11	Barbaruah BPHC	NATUN BOLAI SC	27.33905	94.9053
12	Barbaruah BPHC	GARUDHARIA SC	27.34137	94.8079
13	Barbaruah BPHC	JOKAI DEORI SC	27.34317	94.9413
14	Barbaruah BPHC	SATAISH GHORIA SC	27.34513	94.9283
15	Barbaruah BPHC	BINOIGUTIA SC	27.35173	94.8456
16	Barbaruah BPHC	JOKAI BORBIL SC	27.35323	94.95832
17	Barbaruah BPHC	GOURIPUR SC	27.35353	94.82802
18	Barbaruah BPHC	GHURONIA SC	27.35642	94.86925
19	Barbaruah BPHC	KHAMTIGHAT SC	27.36282	94.94277
20	Barbaruah BPHC	ULUM SC	27.36325	94.97607
21	Barbaruah BPHC	JOKAI FOREST KOIBORTTA SC	27.36505	94.92515
22	Barbaruah BPHC	THENGAL SC	27.36672	94.83405
23	Barbaruah BPHC	SUBACHUK SC	27.37168	94.84663
24	Barbaruah BPHC	BOGIBIL CHAULKHOWA SC	27.37452	94.78503
25	Barbaruah BPHC	KAMAKHYA SC	27.3882	94.98563
26	Barbaruah BPHC	BURAHAZAR SC	27.39205	94.86948
27	Barbaruah BPHC	JAMIRAH TEPOR SC	27.39207	94.82848
27	Barbaruah BPHC	LEPETKATTA KACHARI SC	27.39362	94.88313
29	Barbaruah BPHC	WAKHABI SC	27.39428	94.80432
30	Barbaruah BPHC	MOHMARI SC	27.39667	94.95415
31	Barbaruah BPHC	JAMIRAH MOTTOCK SC	27.40277	94.84343
32	Barbaruah BPHC	GOCHEMORA SC	27.4074	94.86035
33	Barbaruah BPHC	LEKAI SC	27.41972	94.9472
34	Barbaruah BPHC	DAINIJAN SC	27.42453	94.9024
35	Barbaruah BPHC	NAMONI BORPATHER SC	27.43157	94.85778
36	Barbaruah BPHC	KHANIKA SC	27.43207	94.92125
37	Barbaruah BPHC	KHONGIA GAON SC	27.43555	94.89012
38	Barbaruah BPHC	MADHYA BORPATHER SC	27.43795	94.87235
39	Barbaruah BPHC	BOKPARA SC	27.43972	94.94803
40	Barbaruah BPHC	AITHAN DIGHALA SC	27.44495	94.8437
41	Barbaruah BPHC	KACHARBARI SC	27.44637	94.9169
42	Barbaruah BPHC	HATIMORA SC	27.44813	94.9303
43	Barbaruah BPHC	PUHARIKHONIA SC	27.45235	94.86858
44	Barbaruah BPHC	KUMARONICHIGA SC	27.45428	94.89028
45	Barbaruah BPHC	NIRMALI GAON SC	27.45723	94.91372
46	Barbaruah BPHC	NIZ MANKATTA SC	27.45967	94.92177
47	Barbaruah BPHC	NATUN GAON SC	27.46037	94.88517
48	Barbaruah BPHC	CHIRING GAON SC	27.4643	94.89918
49	Barbaruah BPHC	DIBRUMUKH SC	27.47557	94.88897

50	Khowang BPHC	TETONBARI SC	27.10775	94.81693
51	Khowang BPHC	BHOLUKAGURI SC	27.13317	94.78345
52	Khowang BPHC	JHOLOM SC	27.13448	94.86152
53	Khowang BPHC	SEPON CHAKALIA SC	27.1389	94.8176
54	Khowang BPHC	KOMALDOI RONGAGORA SC	27.14073	94.84495
55	Khowang BPHC	TARAJAN SC	27.16213	94.85123
56	Khowang BPHC	SARUPATHER SC	27.16617	94.88737
57	Khowang BPHC	BALIYORI SC	27.17418	94.80833
58	Khowang BPHC	DHEMECHI SC	27.17633	94.79127
59	Khowang BPHC	PATHALIBAM SC	27.18817	94.83082
60	Khowang BPHC	GOZPURIA SC	27.19952	94.86723
61	Khowang BPHC	CHIL CHILI DEMOWKINER SC	27.20027	94.79055
62	Khowang BPHC	LUKUMAI SC	27.20218	94.84995
63	Khowang BPHC	SENCUHA PUKHURI SC	27.2054	94.803
64	Khowang BPHC	TILIKI AMGURI SC	27.20857	94.90282
65	Khowang BPHC	BAMUNBARI SC	27.21102	94.92825
66	Khowang BPHC	PADUMONI SC	27.21365	94.77333
67	Khowang BPHC	TILOI NAGAR SC	27.22362	94.89705
68	Khowang BPHC	HUNGHUNGIA SC	27.22533	94.86575
69	Khowang BPHC	DOOMOR DOLLONG SC	27.22768	94.94257
70	Khowang BPHC	KATHALGURI SC	27.23003	94.8722
71	Khowang BPHC	DIKHARI KINER SC	27.23325	94.82038
72	Khowang BPHC	GHURAGHAS SC	27.23553	94.91937
73	Khowang BPHC	NA HAZAR NAHARANI SC	27.23598	94.84932
74	Khowang BPHC	BORPATHER SC	27.25608	94.82002
75	Khowang BPHC	GHUGULONI SC	27.26003	94.9535
76	Khowang BPHC	RANGCHALI SC	27.26242	94.91327
77	Khowang BPHC	HALODHIBARI NAGAR SC	27.26333	94.85607
78	Khowang BPHC	TENGAPANI SC	27.26855	94.98677
79	Khowang BPHC	BURIKHOWANG SC	27.29157	94.91727
80	Khowang BPHC	JORIGURI SC	27.2932	94.98188
81	Khowang BPHC	CHENIMARI SC	27.30493	94.8816
82	Khowang BPHC	NA KHAT SC	27.30805	95.01498
83	Khowang BPHC	PURONI HOLOGURI SC	27.30887	95.04298
84	Khowang BPHC	KOLOLOWA SONOWAL SC	27.31455	94.94282
85	Khowang BPHC	1NO. CHARAIHABI SC	27.32345	94.9665
86	Khowang BPHC	CHAHARIKATA SC	27.32908	95.0209
87	Khowang BPHC	MESLOW BHARALI SC	27.34095	94.99688
88	Lohawal BPHC	Tita Dimoru SC	27.33872	94.99288
89	Lohawal BPHC	Telpani SC	27.35058	95.06047
90	Lohawal BPHC	Kowaripather SC	27.3625	95.05693
91	Lohawal BPHC	Phutahula SC	27.37917	95.02802
92	Lohawal BPHC	Chagalikata SC	27.38425	95.01713
93	Lohawal BPHC	Chiringholla SC	27.39523	95.0829
94	Lohawal BPHC	Moderkhat SC	27.40355	95.05748
95	Lohawal BPHC	Jiliguri SC	27.40475	95.00383
96	Lohawal BPHC	Ghoramora SC	27.40815	95.04433
97	Lohawal BPHC	Dikom Sessa SC	27.42918	95.10835
98	Lohawal BPHC	Alimur SC	27.42943	95.07685
99	Lohawal BPHC	Gohain Gaon SC	27.44433	95.06

100	Lohawal BPHC	Bakul Majgaon SC	27.44578	94.98382
101	Lohawal BPHC	Hatkholā SC	27.44607	95.0487
102	Lohawal BPHC	Lahowal SC	27.45992	95.00247
103	Lohawal BPHC	Lodoni SC	27.46403	95.06052
104	Lohawal BPHC	Chaulkhowa SC	27.46407	94.96295
105	Lohawal BPHC	Binoigutia SC	27.46422	95.04947
106	Lohawal BPHC	Niz Kodomoni SC	27.46803	94.93473
107	Lohawal BPHC	Athabari SC	27.47025	94.98992
108	Lohawal BPHC	Longswal SC	27.47398	95.06077
109	Lohawal BPHC	Bangal Gaon SC	27.47772	94.9514
110	Lohawal BPHC	Miripather SC	27.48073	95.03115
111	Lohawal BPHC	Sonipotia SC	27.48788	95.06375
112	Lohawal BPHC	Hiloidhari SC	27.4885	94.96547
113	Lohawal BPHC	Borsaikia SC	27.5014	94.93672
114	Lohawal BPHC	Maijan SC	27.5052	94.9534
115	Lohawal BPHC	Phukunorkhat SC	27.51457	95.0881
116	Lohawal BPHC	Kanai Garuchara SC	27.51885	95.04077
117	Lohawal BPHC	Dhupabar Maijan SC	27.5189	95.14927
118	Lohawal BPHC	Nagaghuli SC	27.52488	95.01702
119	Lohawal BPHC	Genichuk SC	27.53138	95.12647
120	Lohawal BPHC	Rohmoria SC	27.54017	95.10213
121	Lohawal BPHC	Bogoritolia SC	27.5443	95.14607
122	Naharani BPHC	FOREST VILLAGE SC	27.14425	95.36938
123	Naharani BPHC	BORBAM SC	27.1488	95.08612
124	Naharani BPHC	GORHSIGA SC	27.15598	95.03895
125	Naharani BPHC	KAMARCHUK SC	27.15717	95.1074
126	Naharani BPHC	KALYANPUR SC	27.15937	95.17758
127	Naharani BPHC	NEMUPATHER SC	27.1687	95.00545
128	Naharani BPHC	BAGHMORA SC	27.17288	95.15208
129	Naharani BPHC	RAJGARH SC	27.18107	95.08973
130	Naharani BPHC	PANIDORIA SC	27.1812	95.35643
131	Naharani BPHC	MAHMORA SC	27.184	95.22457
132	Naharani BPHC	DILLI DOWANIA SC	27.19212	95.3448
133	Naharani BPHC	NAMRUP SC	27.19748	95.35695
134	Naharani BPHC	SISHUMORA BORPATHER SC	27.20093	95.20292
135	Naharani BPHC	NAMRUP GRANT SC	27.20098	95.27862
136	Naharani BPHC	GEREKONI SC	27.20677	95.08047
137	Naharani BPHC	DOLOPA SC	27.20775	95.0016
138	Naharani BPHC	OUPHULIA SC	27.20877	95.02397
139	Naharani BPHC	RONGABONONI SC	27.2118	95.11063
140	Naharani BPHC	HAPJAN CHARIALI SC	27.21362	95.37458
141	Naharani BPHC	DHEKIONI SC	27.21575	95.21792
142	Naharani BPHC	NIGAM SC	27.22367	95.31295
143	Naharani BPHC	RAJGARH RANGALI SC	27.22878	95.2595
144	Naharani BPHC	ROTANPUR SC	27.22905	95.13928
145	Naharani BPHC	KAWOIMARI SC	27.22917	95.29283
146	Naharani BPHC	NAHARPARA BORBIL SC	27.22985	95.04822
147	Naharani BPHC	KEKURI SC	27.23162	94.99325
148	Naharani BPHC	BALIMORA SC	27.23825	95.33733
149	Naharani BPHC	MAJKOPOHUA SC	27.24035	95.35495

150	Naharani BPHC	KAMARGAON SC	27.24058	95.378
151	Naharani BPHC	SAGUNESWA SC	27.246	95.12123
152	Naharani BPHC	NAGAGHAT SC	27.25167	95.41143
153	Naharani BPHC	NAHULLA SC	27.2534	95.0217
154	Naharani BPHC	OUGURI SC	27.2546	95.09253
155	Naharani BPHC	LONGJONG SC	27.2686	95.35088
156	Naharani BPHC	NACHANI SC	27.27603	95.06398
157	Naharani BPHC	DHAMAN SALMARI SC	27.2816	95.12965
158	Naharani BPHC	NAMPHAKIYAL SC	27.28242	95.36722
159	Naharani BPHC	SUKANI SC	27.2907	95.1893
160	Naharani BPHC	AGHUNIBARI SC	27.29357	95.06955
161	Naharani BPHC	HALUWA SC	27.29575	95.236
162	Naharani BPHC	DISANG RONGSWAL SC	27.3011	95.14357
163	Naharani BPHC	MOTHAWONI SC	27.30318	95.15918
164	Naharani BPHC	SESSA NEPALI SC	27.30725	95.1008
165	Naharani BPHC	MERBIL SC	27.30915	95.20778
166	Naharani BPHC	GOZPURIA SC	27.30942	95.26922
167	Naharani BPHC	SASSONI SC	27.31678	95.22542
168	Naharani BPHC	UDOIPUR SC	27.34312	95.19525
169	Panitola BPHC	PAKHORIJONIA SC	27.42463	95.22338
170	Panitola BPHC	KOPOHUA SC	27.4413	95.19813
171	Panitola BPHC	UDALGURI CHABUA SC	27.44518	95.18405
172	Panitola BPHC	SESSA KASH SC	27.45668	95.20968
173	Panitola BPHC	PULUNGA SC	27.47308	95.20655
174	Panitola BPHC	CHABUA URBAN SC	27.48145	95.17085
175	Panitola BPHC	KOILABARI SC	27.48935	95.1505
176	Panitola BPHC	HATI GADHOI SC	27.49115	95.10913
177	Panitola BPHC	BISMILE SC	27.49195	95.19185
178	Panitola BPHC	CHETIA GAON SC	27.49855	95.14463
179	Panitola BPHC	BAMUNIA HILOIDHARI SC	27.5122	95.13838
180	Panitola BPHC	DINJOY SATRA CHAPORI SC	27.51687	95.1781
181	Panitola BPHC	BALIJAN MORICHA SC	27.51792	95.16057
182	Panitola BPHC	BHARALUA SC	27.52335	95.19982
183	Panitola BPHC	UDALGURI DIGHALIBARI SC	27.52353	95.2399
184	Panitola BPHC	PUKHURIJAN SC	27.5543	95.19863
185	Panitola BPHC	BINDHAKATA SC	27.55703	95.2165
186	Panitola BPHC	GEREKI NEPALI SC	27.5651	95.24908
187	Panitola BPHC	DODHIA RONGMALA SC	27.57035	95.21958
188	Tengakhath BPHC	USHAPUR FAIYAL SC	27.27582	95.39612
189	Tengakhath BPHC	Betoni SC	27.29043	95.42658
190	Tengakhath BPHC	Bamungaon SC	27.30775	95.34448
191	Tengakhath BPHC	Digboimukh SC	27.31232	95.34357
192	Tengakhath BPHC	Bhadoi Panchali SC	27.31753	95.42528
193	Tengakhath BPHC	DIHINGHULA SC	27.32202	95.0769
194	Tengakhath BPHC	Rongagora SC	27.3241	95.37652
195	Tengakhath BPHC	Dhekiajan Kathalguri SC	27.33863	95.44918
196	Tengakhath BPHC	Pavojan SC	27.33922	95.28468
197	Tengakhath BPHC	Kathalguri SC	27.34108	95.2767
198	Tengakhath BPHC	Chalakotoky SC	27.3439	95.31123
199	Tengakhath BPHC	HATIBONDHA SC	27.34808	95.13367

200	Tengakhath BPHC	BELBARI SC	27.3511	95.09995
201	Tengakhath BPHC	KHERMIA SC	27.35395	95.2494
202	Tengakhath BPHC	Sissia Bokuloni SC	27.35958	95.41133
203	Tengakhath BPHC	PANDHOWA SC	27.36348	95.18215
204	Tengakhath BPHC	TINGRAI CHARIALI SC	27.36348	95.22728
205	Tengakhath BPHC	Kacharipather SC	27.3642	95.28258
206	Tengakhath BPHC	2 NO. BORBAM SC	27.36513	95.12643
207	Tengakhath BPHC	KOPOHUA SC	27.3657	95.16992
208	Tengakhath BPHC	Nawholia SC	27.373	95.3552
209	Tengakhath BPHC	DHORIA SC	27.37405	95.09867
210	Tengakhath BPHC	CHENIBIL SC	27.37667	95.12672
211	Tengakhath BPHC	Gozalbasti SC	27.38072	95.30427
212	Tengakhath BPHC	Hatijan SC	27.38735	95.40445
213	Tengakhath BPHC	BHEKULAJAN SC	27.39802	95.18823
214	Tengakhath BPHC	Borhula Kachari SC	27.39952	95.21292
215	Tengakhath BPHC	WILTON SC	27.40047	95.12833
216	Tengakhath BPHC	KACHOGAON SC	27.40395	95.15492