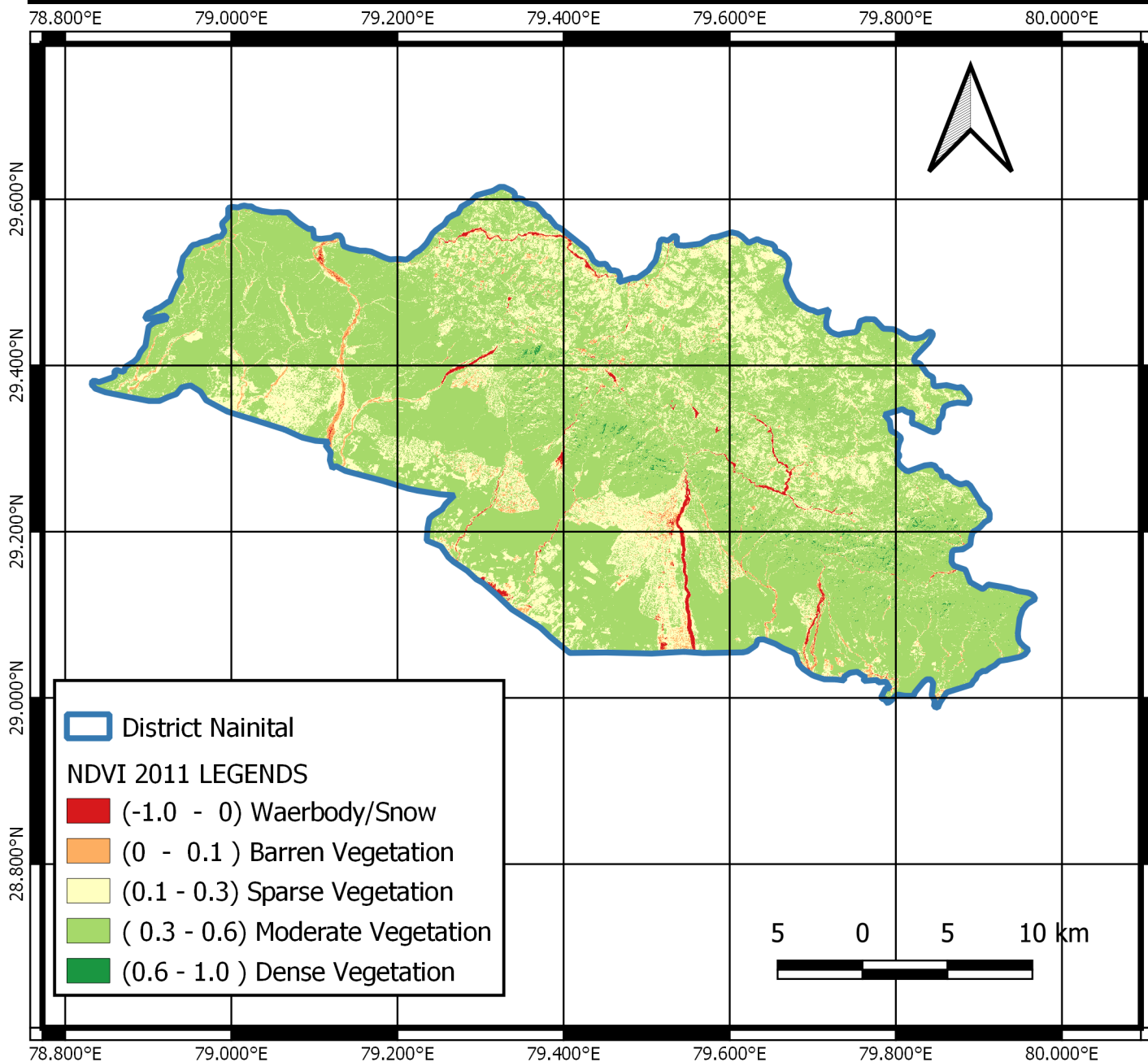


# CHANGE DETECTION

## NDVI 2011 ( Nainital District )



## MAP DESCRIPTION

### INTRODUCTION:

Nainital is located at the Kumaon foothills. It is rich in flora and fauna. Various species of medicinal flora also been found here.

### NDVI:

Normalized difference vegetation index is a effective index for quantifying green vegetation. It normalizes green leaf scattering in Near Infra-red wavelengths with chlorophyll absorption in red wavelengths.

$$\text{NDVI} = (\text{NIR} - \text{RED}) / (\text{NIR} + \text{RED})$$

NDVI values range from +1.0 to -1.0.

Name: Tarun Singh Panu  
Email: tspnitmin@gmail.com