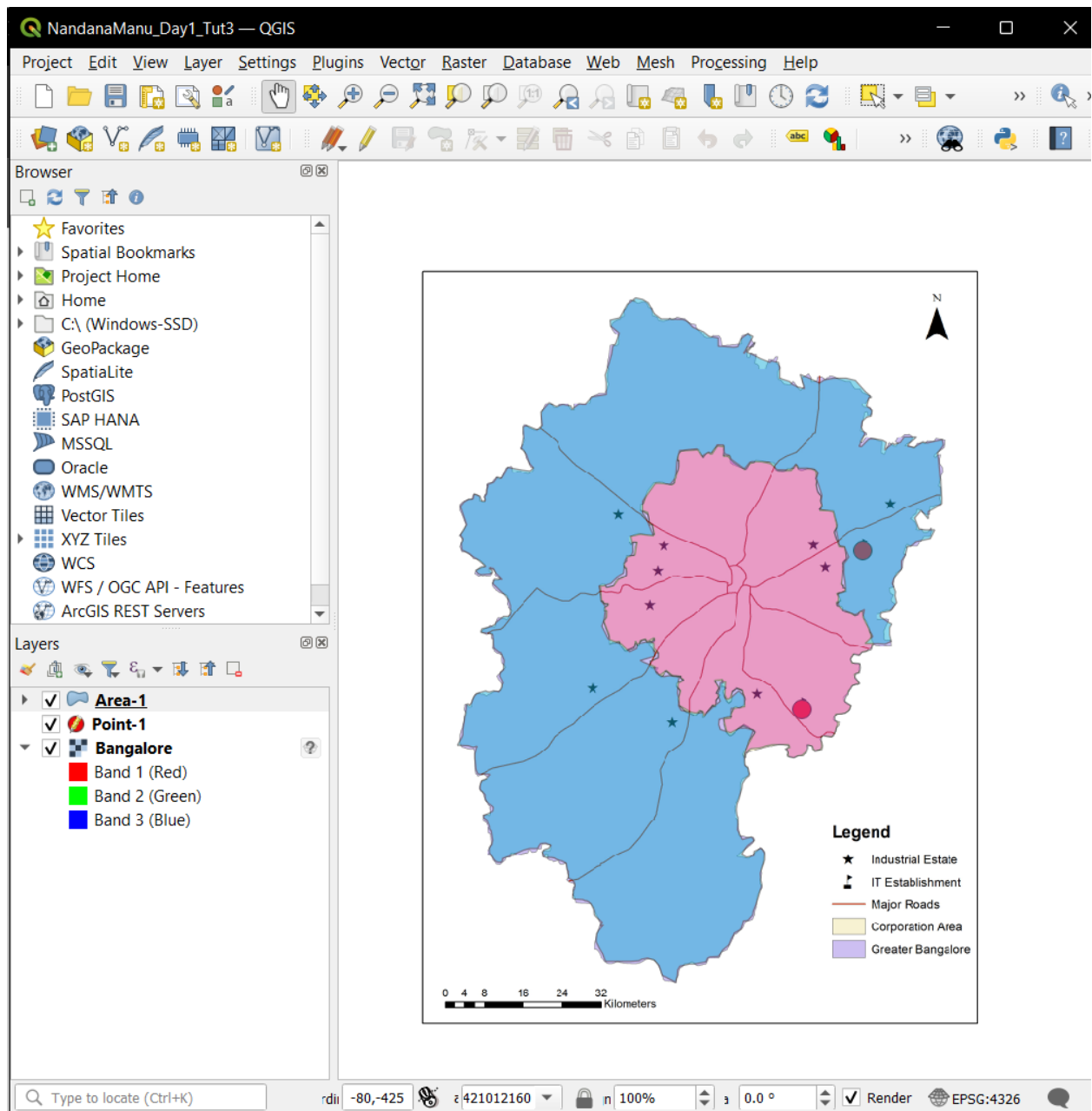


Tutorial Outputs

Tutorial 3



QGIS interface showing a map of Bangalore with various layers and a legend.

Browser

- Favorites
 - Spatial Bookmarks
 - Home
 - C:\ (Windows-SSD)
 - GeoPackage
 - SpatialLite
 - PostGIS
 - SAP HANA
 - MSSQL
 - Oracle
 - WMS/WMTS
 - Vector Tiles
 - XYZ Tiles
 - WCS
 - WFS / OGC API - Features
 - ArcGIS REST Servers
 - GeoNode

Layers

- Area-1
- Point-1
 - Band 1 (Red)
 - Band 2 (Green)
 - Band 3 (Blue)

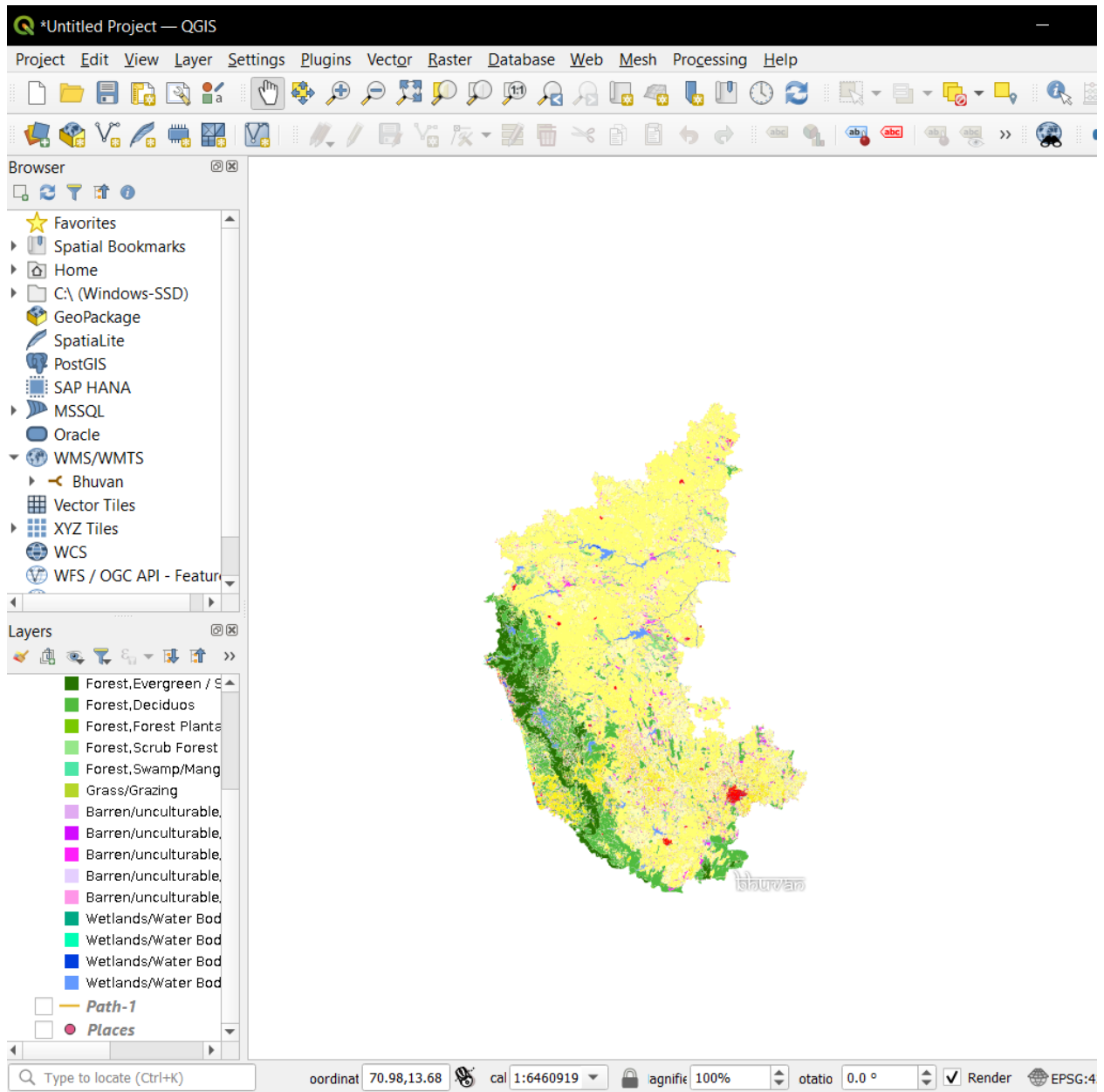
Legend

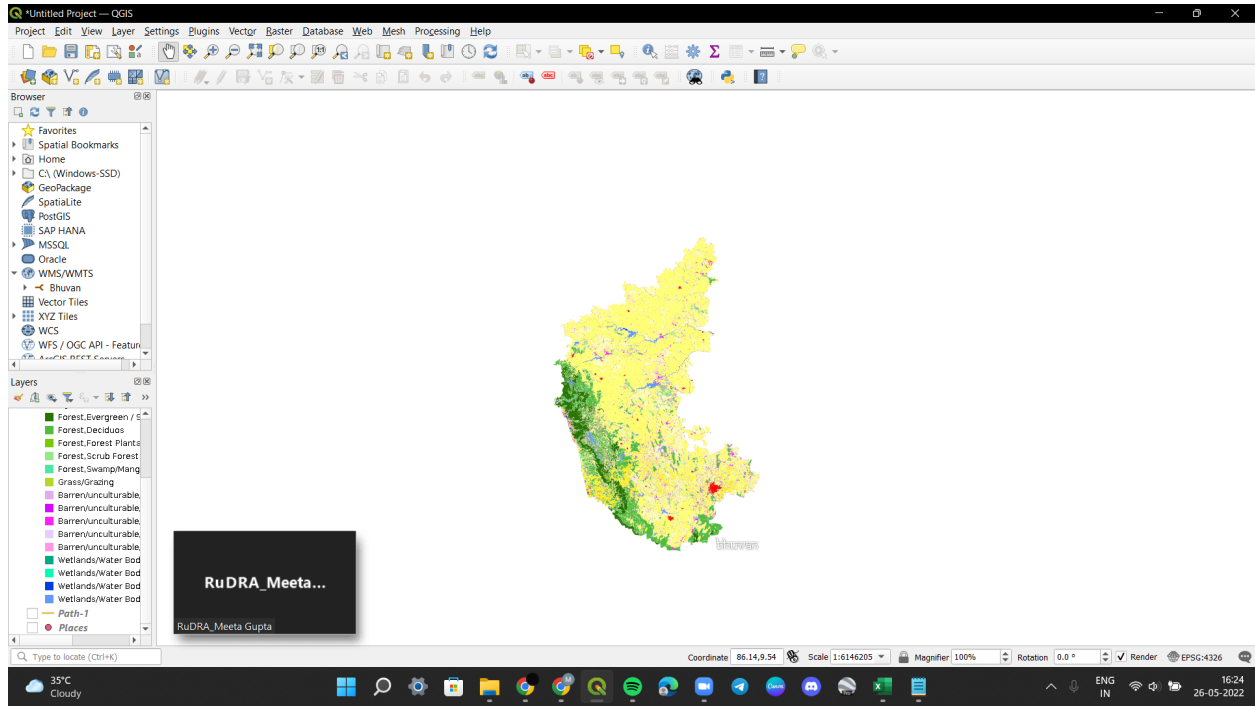
- Industrial Estate
- IT Establishment
- Major Roads
- Corporation Area
- Greater Bangalore

Map details: Scale 1:45306816, Magnifier 100%, Rotation 0.0°, Coordinate 3476,3267, EPSG:4326.

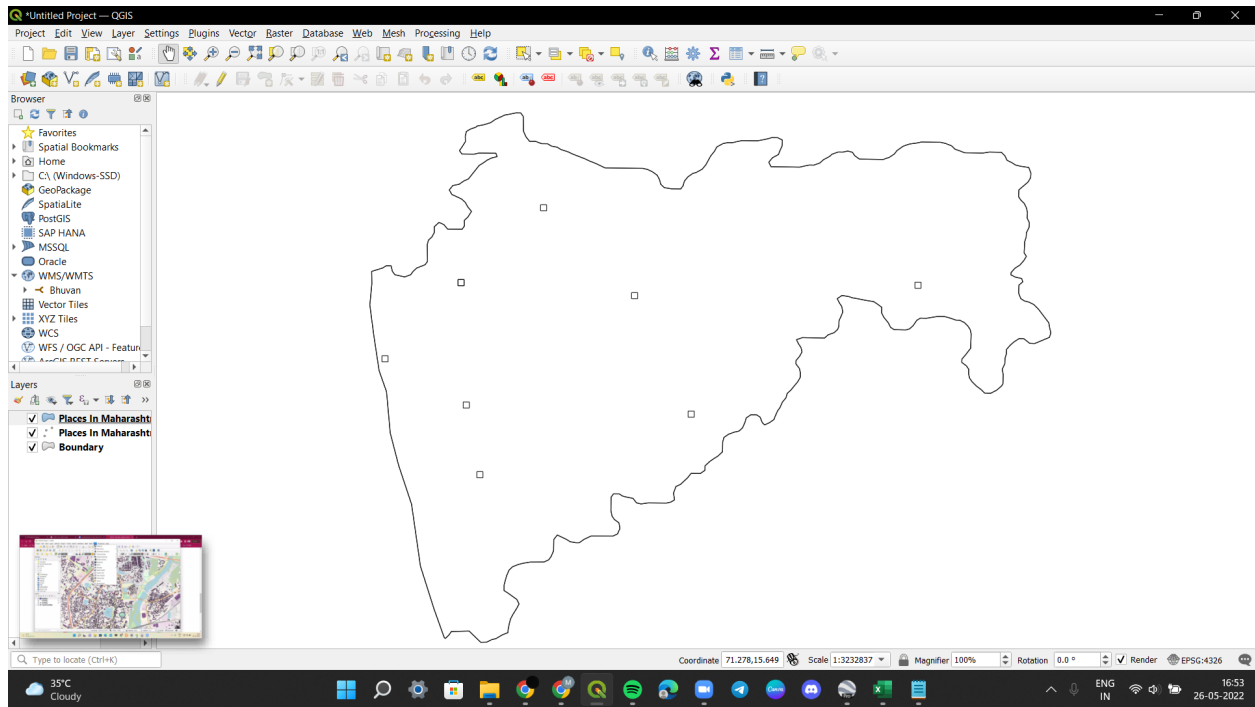
System tray: 37°C Cloudy, 15:30, 26-05-2022.

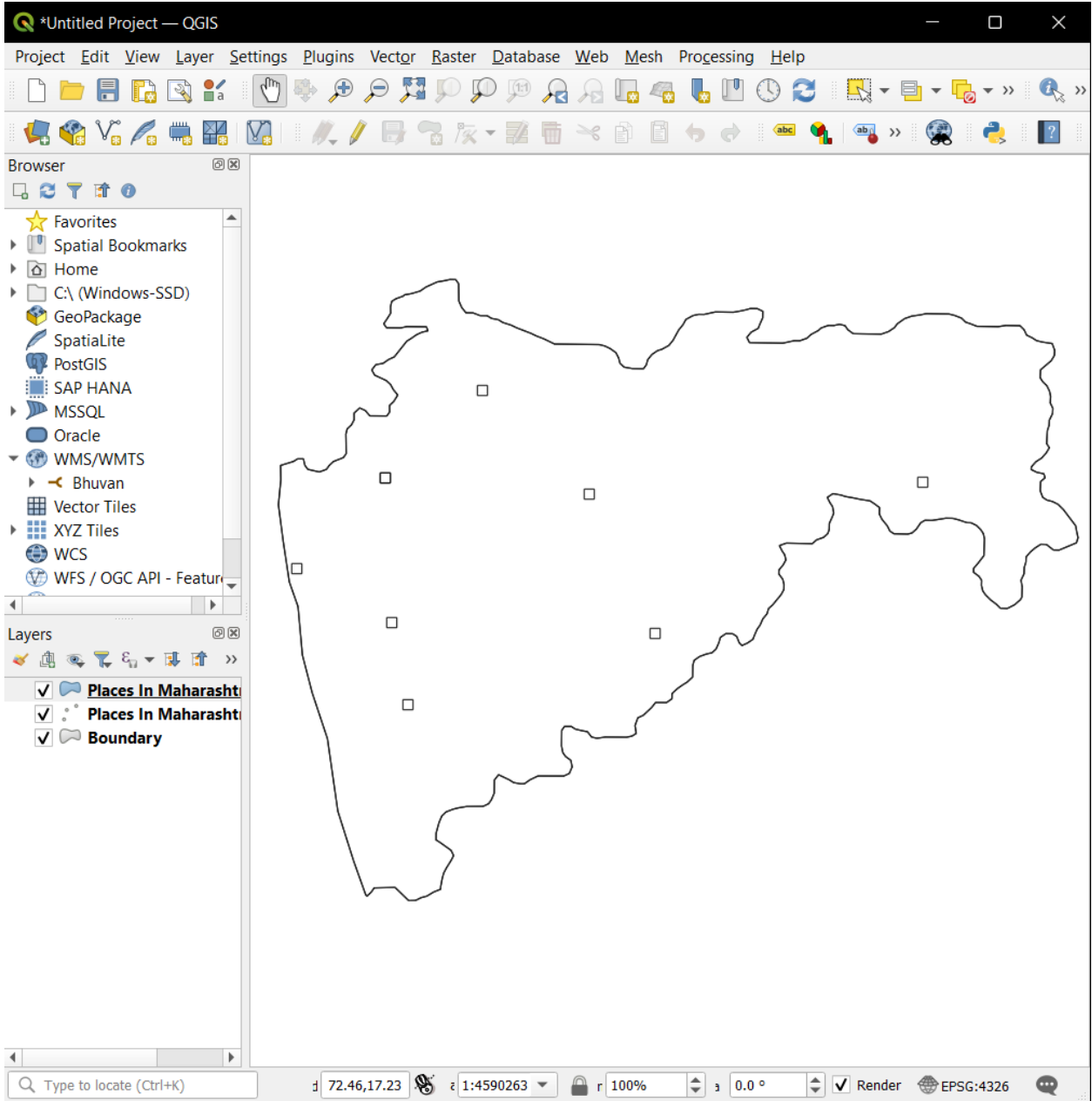
Tutorial 4



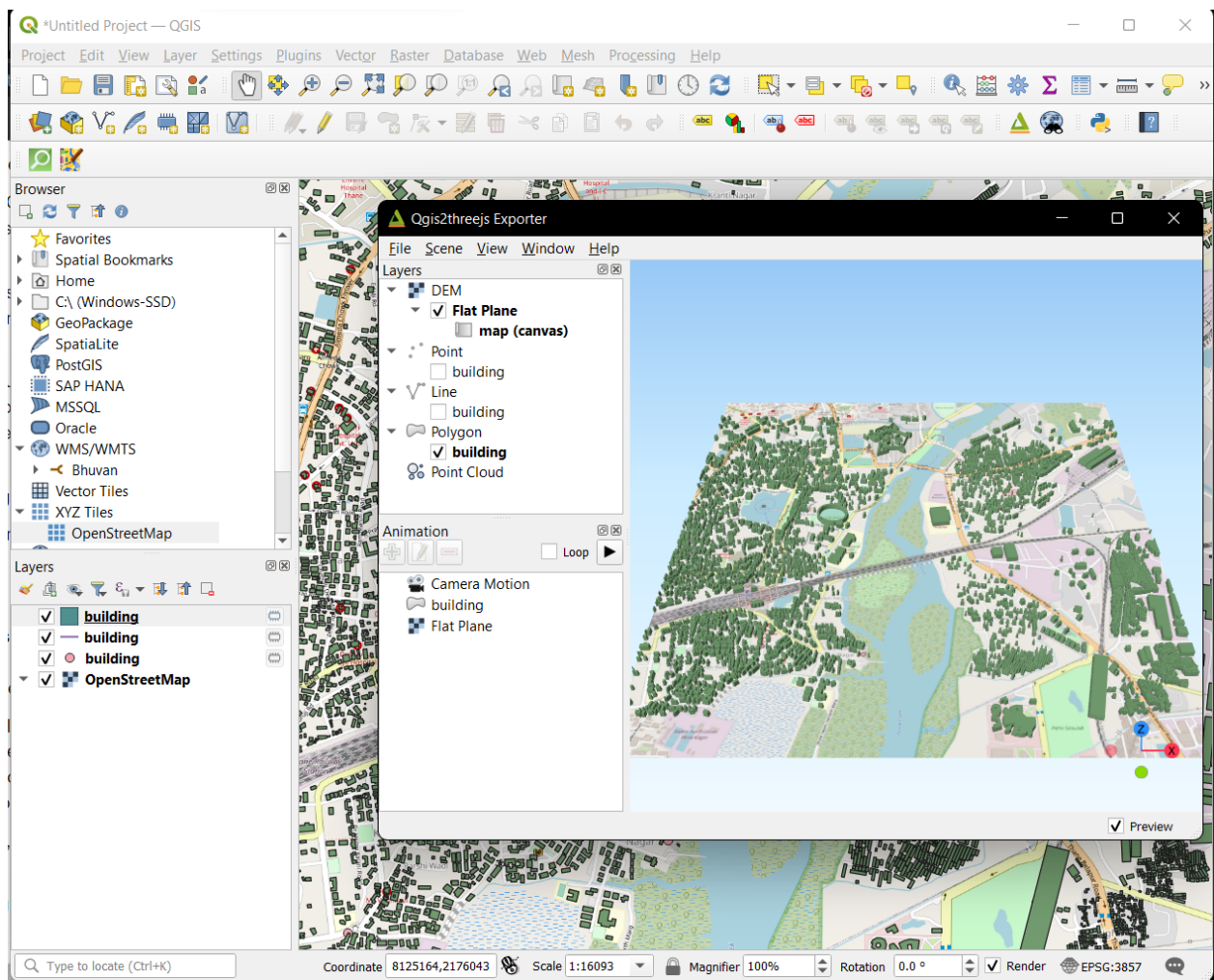


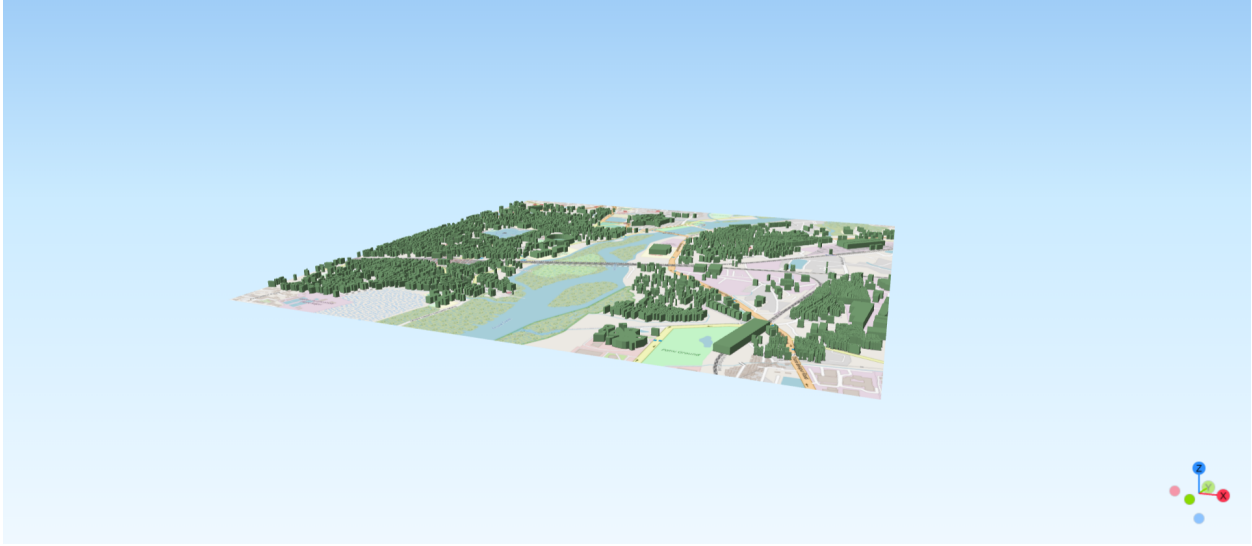
Tutorial 9



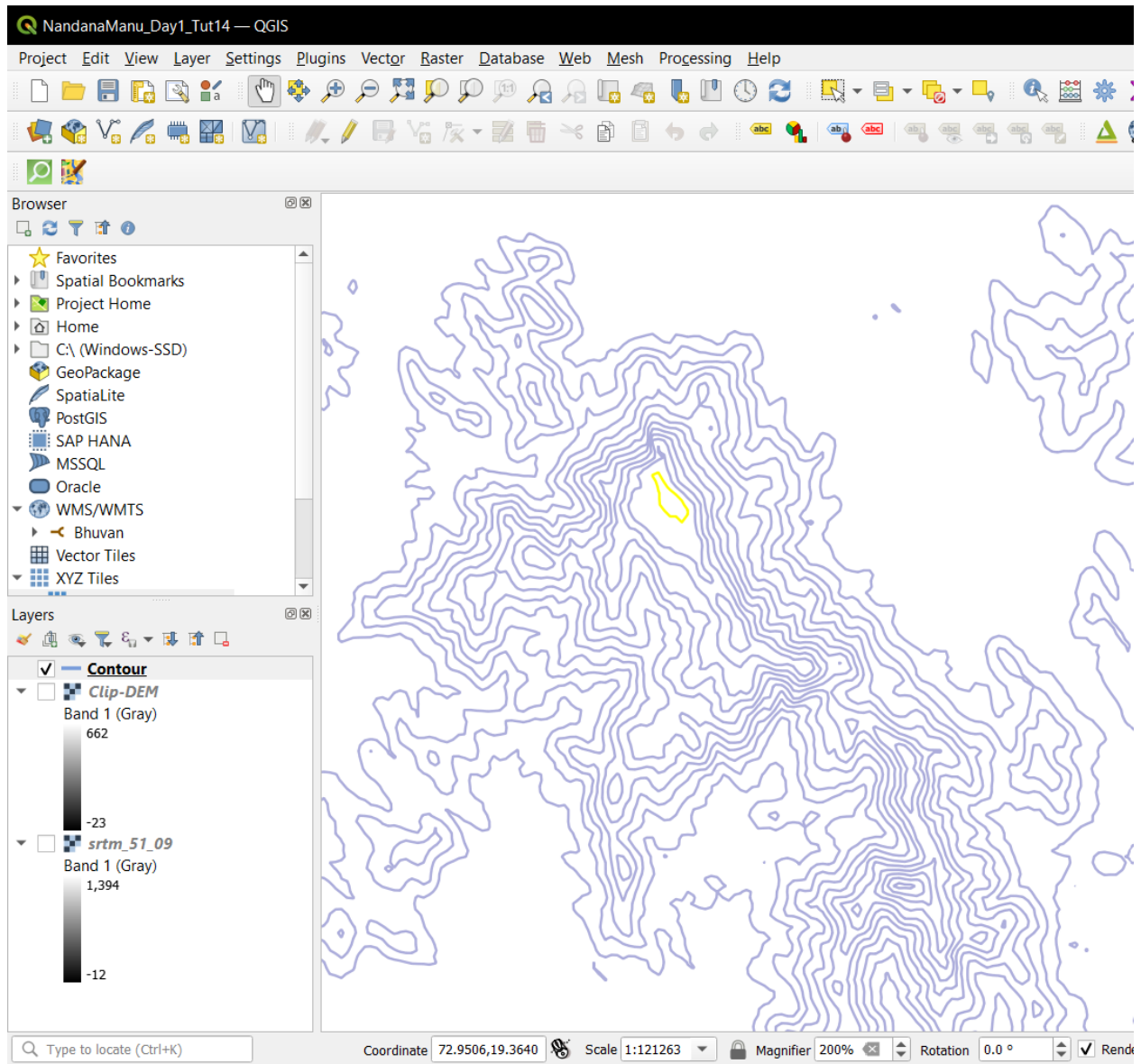


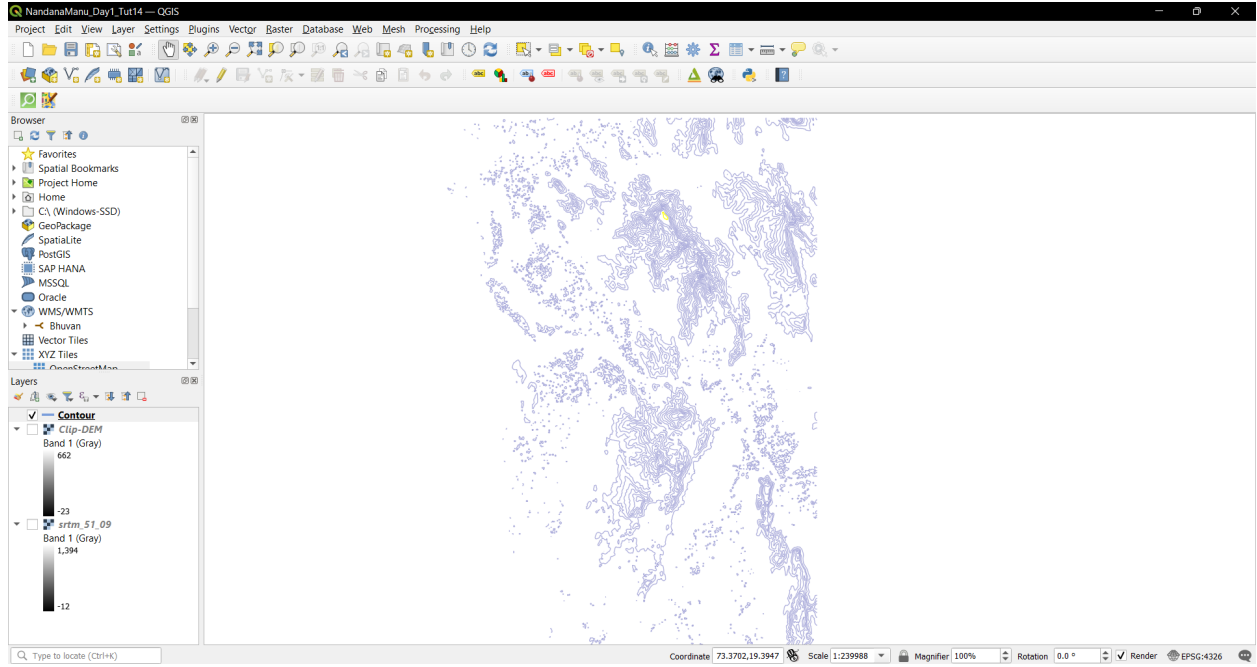
Tutorial 10



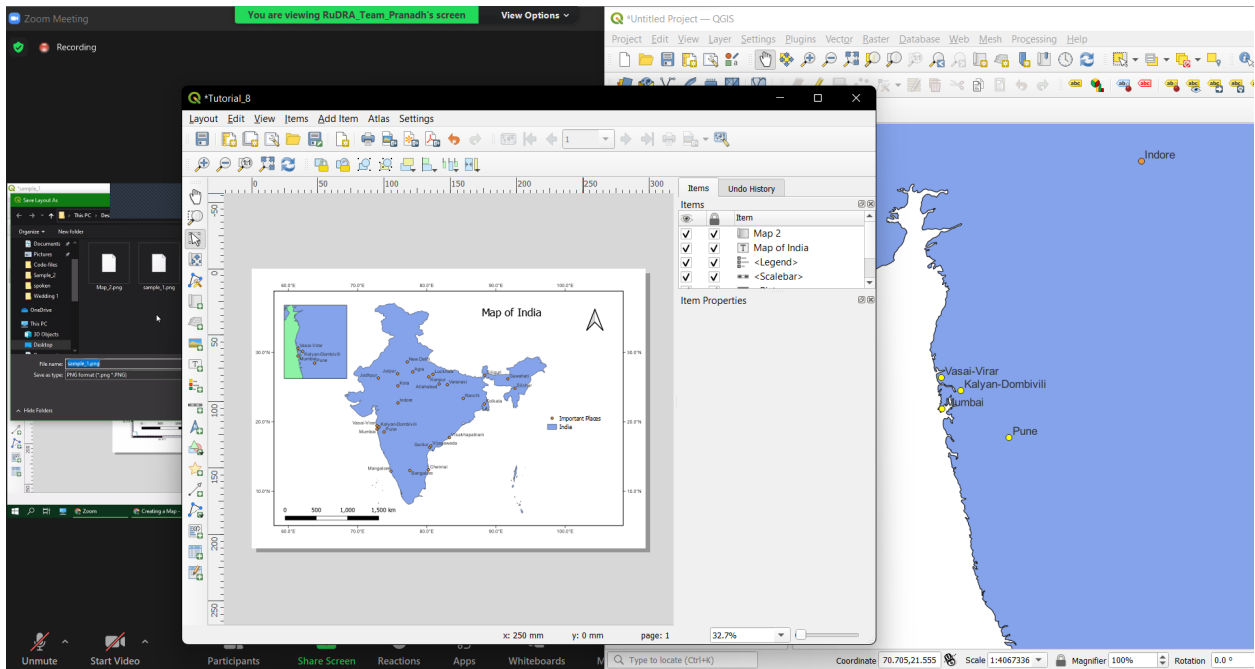


Tutorial 14





Tutorial 8



Tutorial 13

