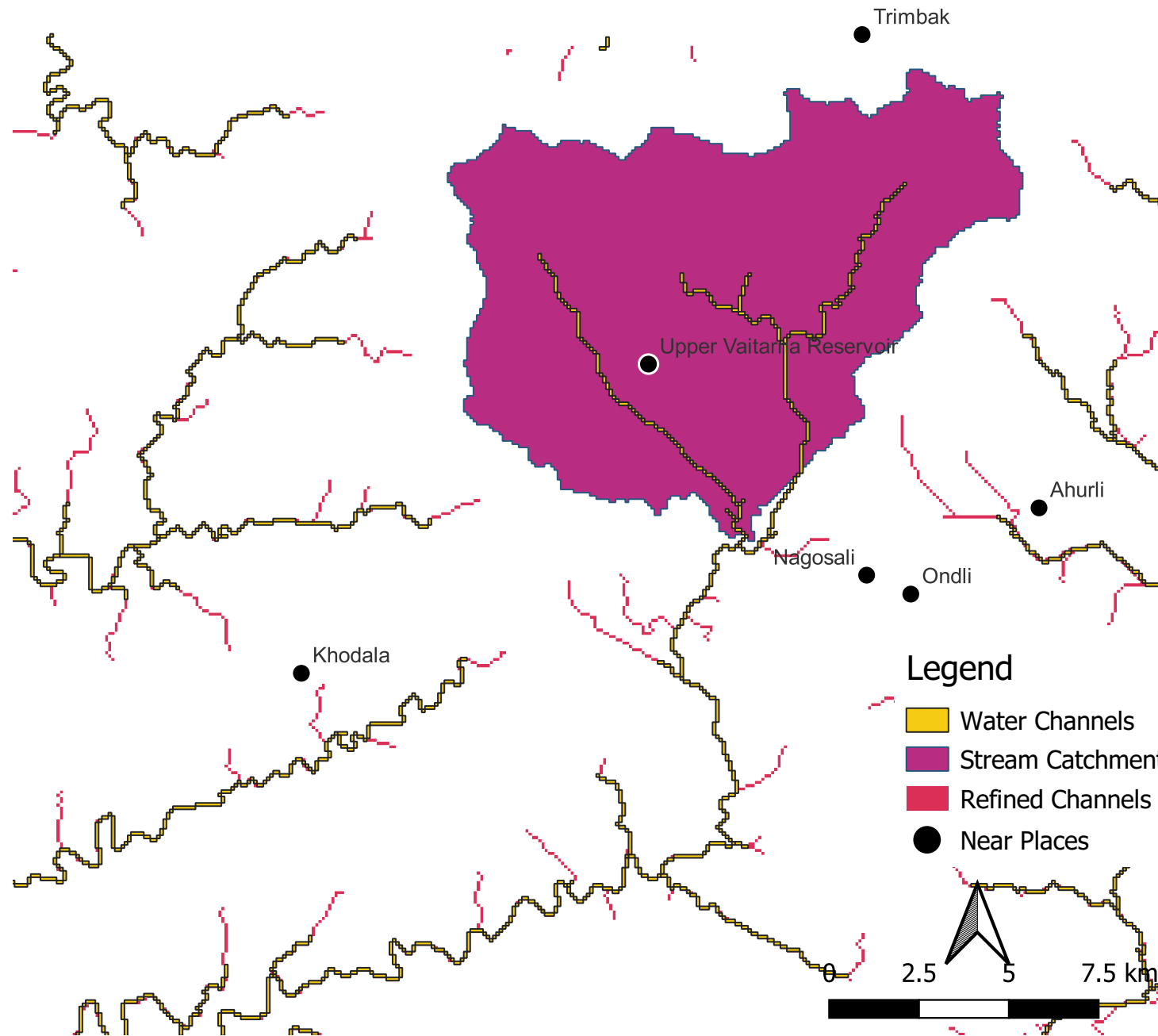


WATER OUTLET SYSTEM OF VAITARNA RESERVOIR

MAP description and analysis



Introduction:

This Project was done On Vaitarna Reservoir with the help of Qgis grass. to find RiverCatchment Areas using DEM map and Grass Plugin.

Process that are used to make this MAP

Importing DEM file to get elevation Values

Then Wrap project was done to get UTM value (used Google EARTH pro for UTM value)

OSM For accuracy check

Grass Plugin

`r.Fill.dir`

`r.watershed (mim size of basin:1000)(D8 methode).`

this process was used to find water accumulation.Value was Direction was converted to positive because negative value was not needed in this work.

`r.stream.extract`

`r.water.outlet(to find water catchnet)`

Other small changes were made

Legend

- Water Channels
- Stream Catchment
- Refined Channels
- Near Places

Topic : Natural Rain Drainage System

Student ID : 245807