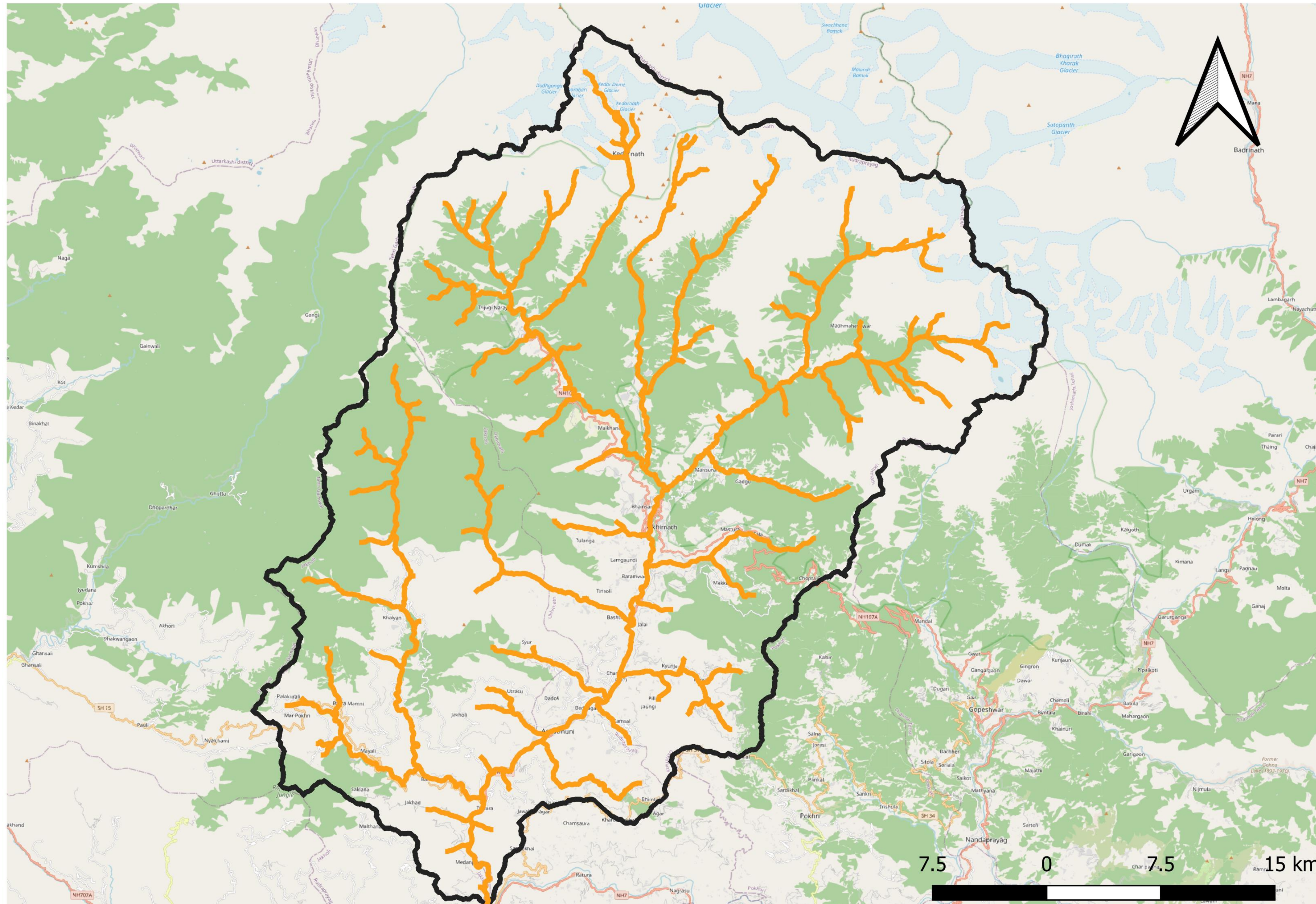


Title: River Network of Mandakini Basin

Map description and analysis



The Mandakini River is a tributary of the Alaknanda River in the Indian state of Uttarakhand.

The river runs for approximately 81 kilometers (50 mi) between the Rudraprayag and Sonprayag areas and emerges from the Chorabari Glacier.

The river merges with river Songanga at Sonprayag and flows past the Hindu temple Madhyamaheshwar at Ukhimath.

At the end of its course, it drains into the Alaknanda, which flows into the Ganges.

The Mandakini is considered a sacred river within Uttarakhand as it runs past the Kedarnath and Madhyamaheshwar temples.

Legends

- mandakini
- ▭ catchment vector
- Google Satellite

Team Name: Vistaar

Topic: River Network of Mandakini

Basin

Team member/lead: Srushti Kandoi

Contact/email: plannera.t2021@gmail.com

(Data courtesy: Earth Explorer, Qgis)