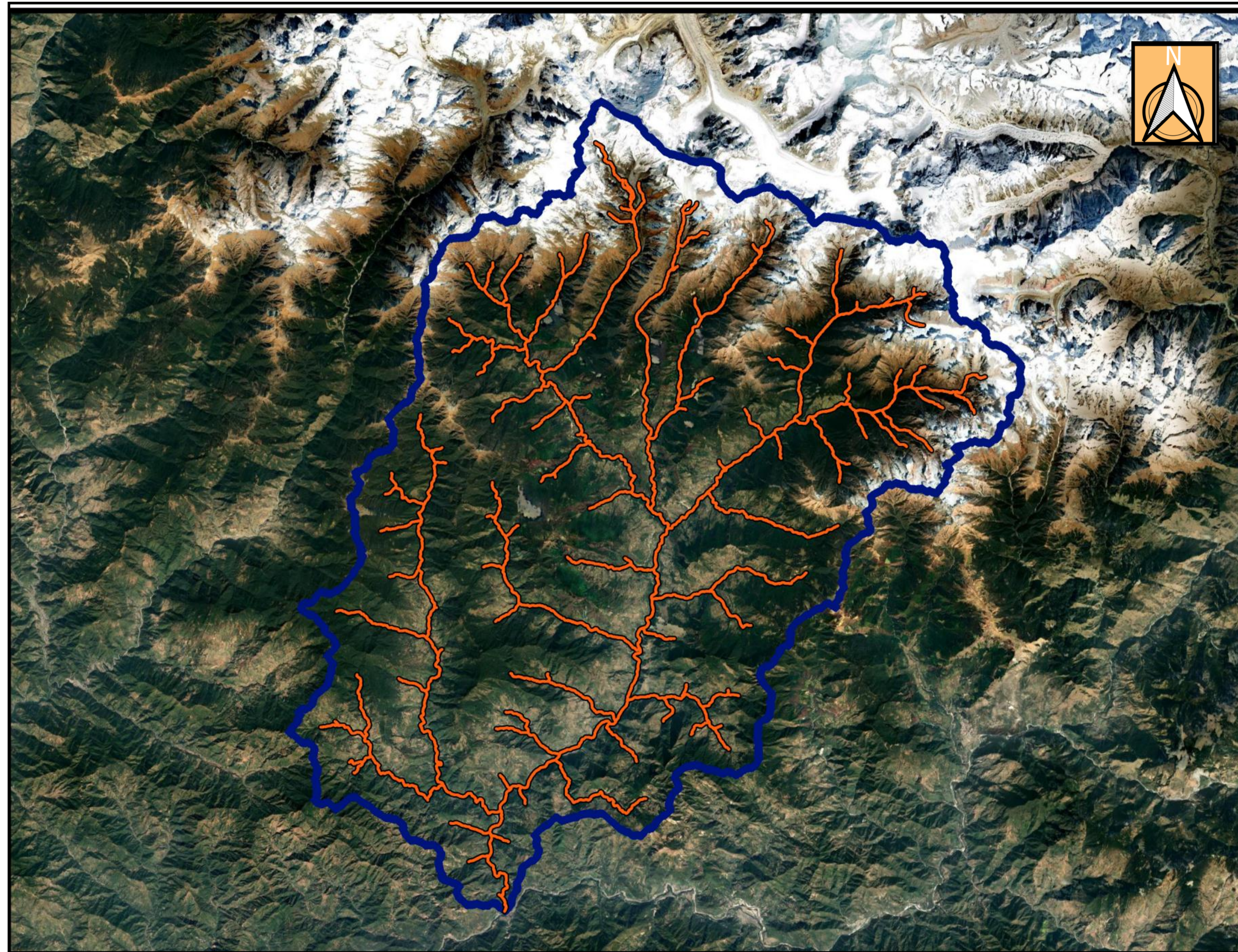


# Title: River Network of Mandakini Basin

## Map description and analysis



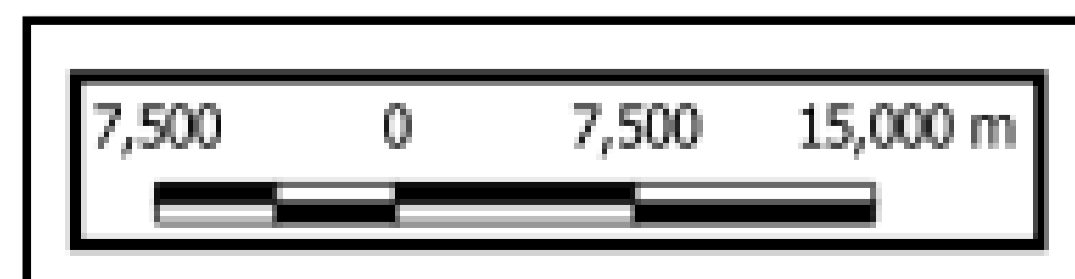
The Mandakini River is a tributary of the Alaknanda River in the Indian state of Uttarakhand.

The river runs for approximately 81 kilometres (50 mi) between the Rudraprayag and Sonprayag areas and emerges from the Chorabari Glacier.

The river merges with river Songanga at Sonprayag and flows past the Hindu temple Madhyamaheshwar at Ukhimath.

At the end of its course it drains into the Alaknada, which flows into the Ganges.

The Mandakini is considered a sacred river within Uttarakhand as it runs past the Kedarnath and Madhyamaheshwar temples.



**Legends**

- mandakini
- ▭ catchment vector

Google Satellite

**Team Name:** Vistaar

**Topic:** River Network of Mandakini

Basin

**Team member/lead:** Abhishek Amarshibhai Tank

**Contact/email:** [plannera.t2021@gmail.com](mailto:plannera.t2021@gmail.com)

(Data courtesy: Earth Explorer, Qgis)