

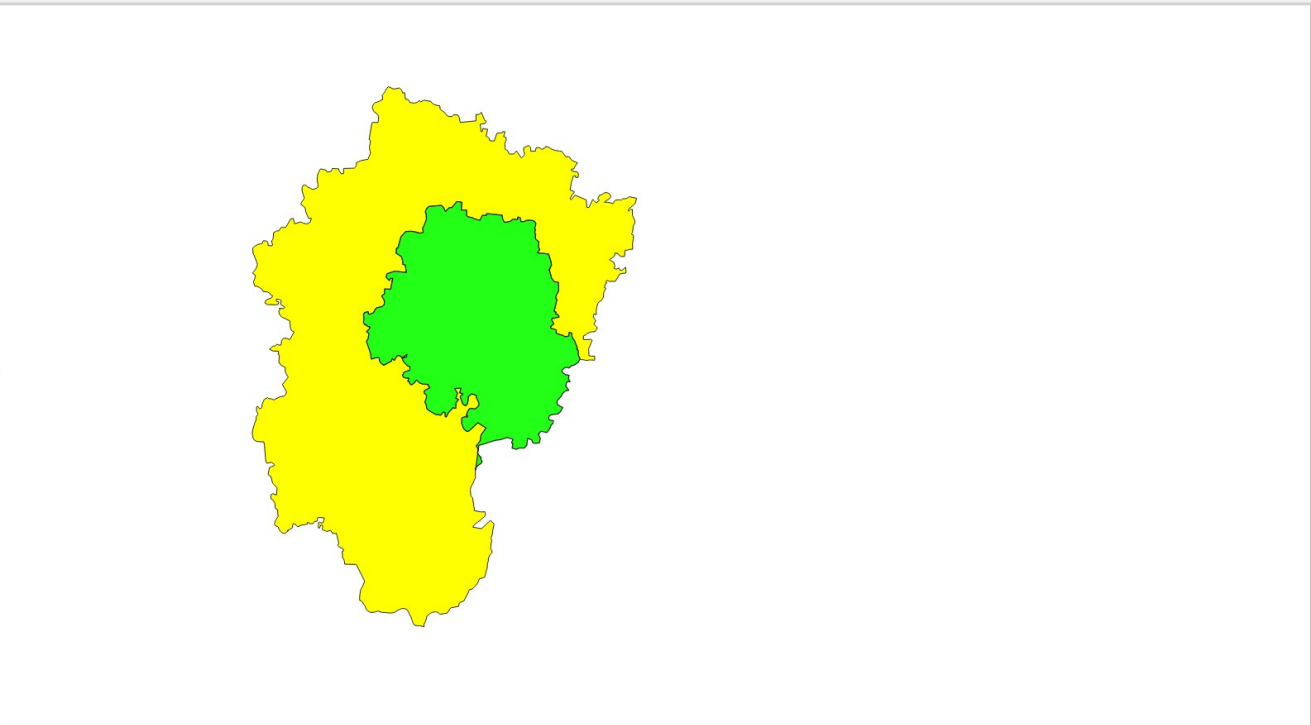
Browser

- River Mapping
  - Day1 Tutorial
    - Code-files
      - ne\_10m\_admin\_0\_c
        - Bangalore.jpg
        - indiaboundary.shp
        - places.shp
        - world.shp
      - Coordinate-Reference-
      - Create-Contour-Lines-C
      - Creating-a-Map-Codef
      - Geometric-Properties-z

Layer Order Browser

Layers

- Point-1
- Area-1
- OpenStreetMap
- Bangalore





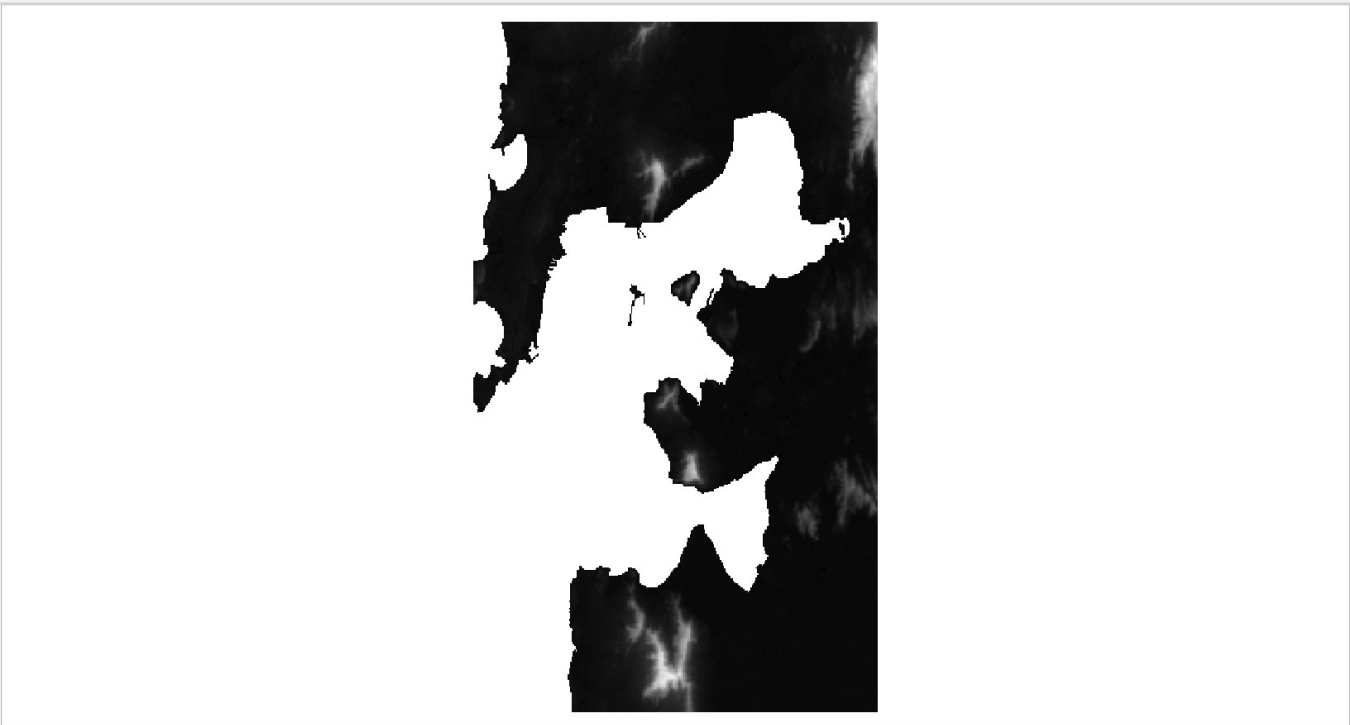
Browser

- Importing-Sprea
- Interpolation-Co
- Nearest-Neighb
- outputs
  - Clip-Dem.tif
  - Contour.shp
  - Path-1.jpg
  - Path-1.shp
  - Path-2.jpg
  - Path-2.shp
  - WMS.jpg
- Raster-Data-Styl

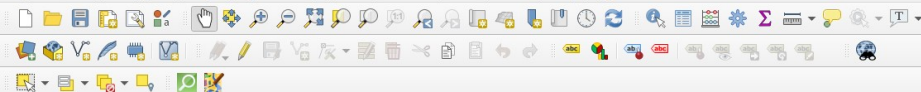
Layer Order Browser

Layers

- Clip-Dem**
  - 16
  - 397
- Contour**
- srtm\_51\_09**
  - 12
  - 1394
- OpenStreetMap**
  - Path-2
  - Path-1
  - Places



Type to locate (Ctrl+K)



Browser

- Importing-Sprea
- Interpolation-Co
- Nearest-Neighb
- outputs
  - Clip-Dem.tif
  - Contour.shp
  - Path-1.jpg
  - Path-1.shp
  - Path-2.jpg
  - Path-2.shp
  - WMS.jpg
- Raster-Data-Styl

Layer Order Browser

Layers

- Clip-Dem
  - 16
  - 397
- Contour
- srtm\_51\_09
  - 12
  - 1394
- OpenStreetMap
  - Path-2
  - Path-1
  - Places



Type to locate (Ctrl+K)

# Map of India



0 500 1,000 1,500 km

50.0 60.0 70.0 80.0 90.0 100.0

40.0

30.0

20.0

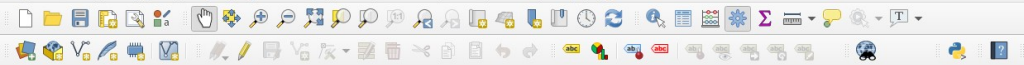
10.0

40.0

30.0

20.0

10.0



Browser

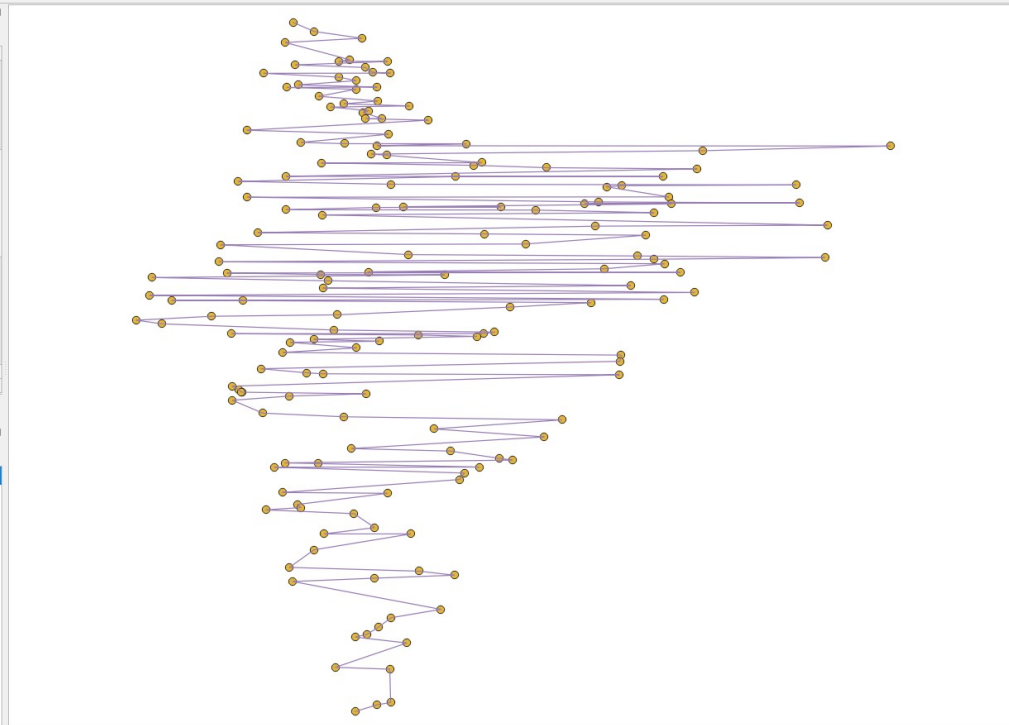
- Python 3.8
- Python27
- QGIS
  - qgis
    - River Mapping
      - Day1 Tutorial
        - Code-files
          - ne\_10m\_admin\_0\_countries
            - Bangalore.jpg
          - Coordinate-Reference-Systems-1
          - Importing-Spreadsheets-Codefil
            - Code files
              - Places.csv
              - Places.txt
              - Places.txt
            - New folder
            - spoken
          - GIS for River Mapping

Layer Order

Browser

Layers

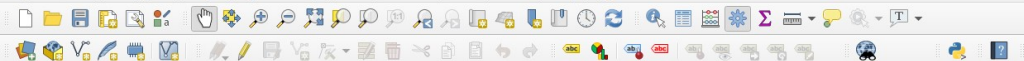
- Path-2
- Path-1
- Places



Processing Toolbox

Search...

- Recently used
- Cartography
- Database
- File tools
- Interpolation
- Layer tools
- Mesh
- Network analysis
- Plots
- Raster analysis
- Raster creation
- Raster terrain analysis
- Raster tools
- Vector analysis
- Vector creation
  - Array of offset (parallel) lines
  - Array of translated features
  - Create grid
  - Create points layer from ta...
  - Generate points (pixel centr...
  - Generate points (pixel centr...
  - Import geotagged photos
  - Points to path
  - Random points along line
  - Random points in extent
  - Random points in layer bou...
  - Random points in polygons
  - Random points inside poly...
  - Random points on lines
  - Raster pixels to points
  - Raster pixels to polygons
  - Regular points
- Vector general
- Vector geometry
- Vector overlay
- Vector selection



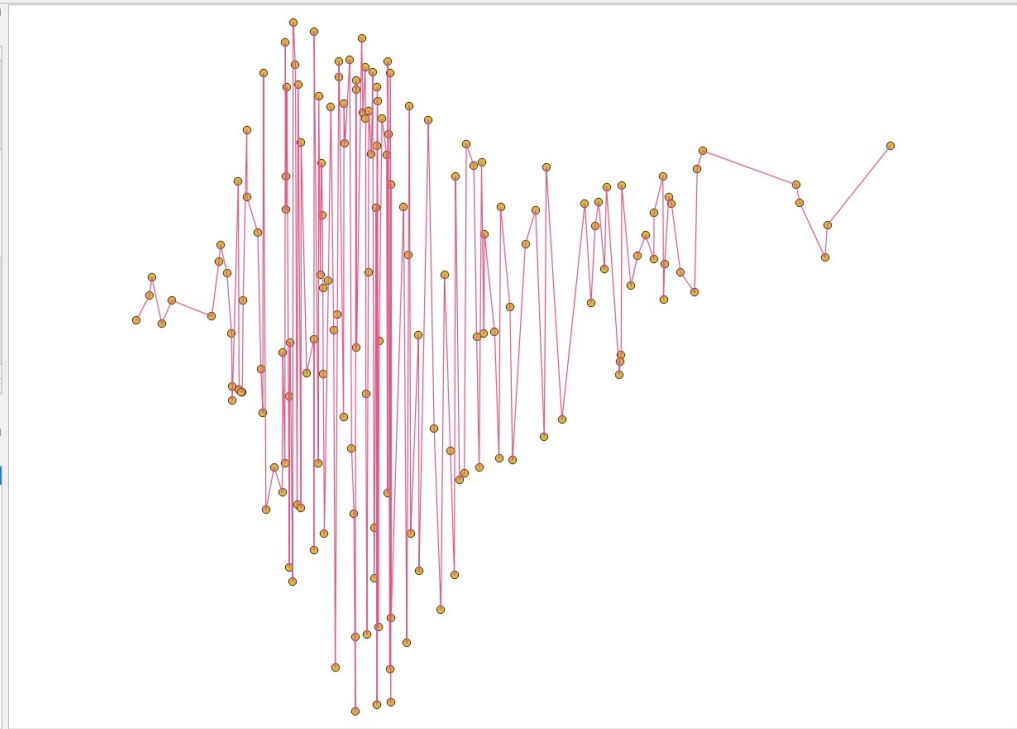
Browser

- Python 3.8
- Python27
- QGIS
  - qgis
    - River Mapping
      - Day1 Tutorial
        - Code-files
          - ne\_10m\_admin\_0\_countries
          - Bangalore.jpg
          - Coordinate-Reference-Systems-1
          - Importing-Spreadsheets-Codefil
            - Code files
              - Places.csv
              - Places.txt
              - Places.txt
            - New folder
            - spoken
          - GIS for River Mapping

Layer Order Browser

Layers

- Path-2
- Path-1
- Places



Processing Toolbox

Search...

- Recently used
- Cartography
- Database
- File tools
- Interpolation
- Layer tools
- Mesh
- Network analysis
- Plots
- Raster analysis
- Raster creation
- Raster terrain analysis
- Raster tools
- Vector analysis
- Vector creation
  - Array of offset (parallel) lines
  - Array of translated features
  - Create grid
  - Create points layer from ta...
  - Generate points (pixel centr...
  - Generate points (pixel centr...
  - Import geotagged photos
  - Points to path
  - Random points along line
  - Random points in extent
  - Random points in layer bou...
  - Random points in polygons
  - Random points inside poly...
  - Random points on lines
  - Raster pixels to points
  - Raster pixels to polygons
  - Regular points
- Vector general
- Vector geometry
- Vector overlay
- Vector selection



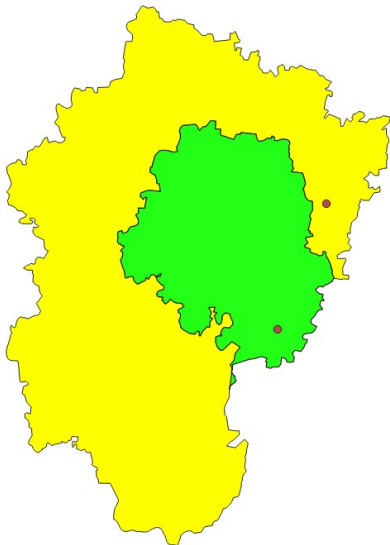
Browser

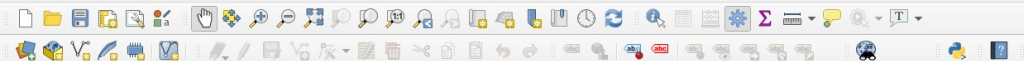
- River Mapping
  - Day1 Tutorial
    - Code-files
      - ne\_10m\_admin\_0\_c
        - Bangalore.jpg
        - indiaboundary.shp
        - places.shp
        - world.shp
      - Coordinate-Reference-
      - Create-Contour-Lines-C
      - Creating-a-Map-Codef
      - Geometric-Properties-z

Layer Order Browser

Layers

- Point-1
- Area-1
- OpenStreetMap
- Bangalore





Browser

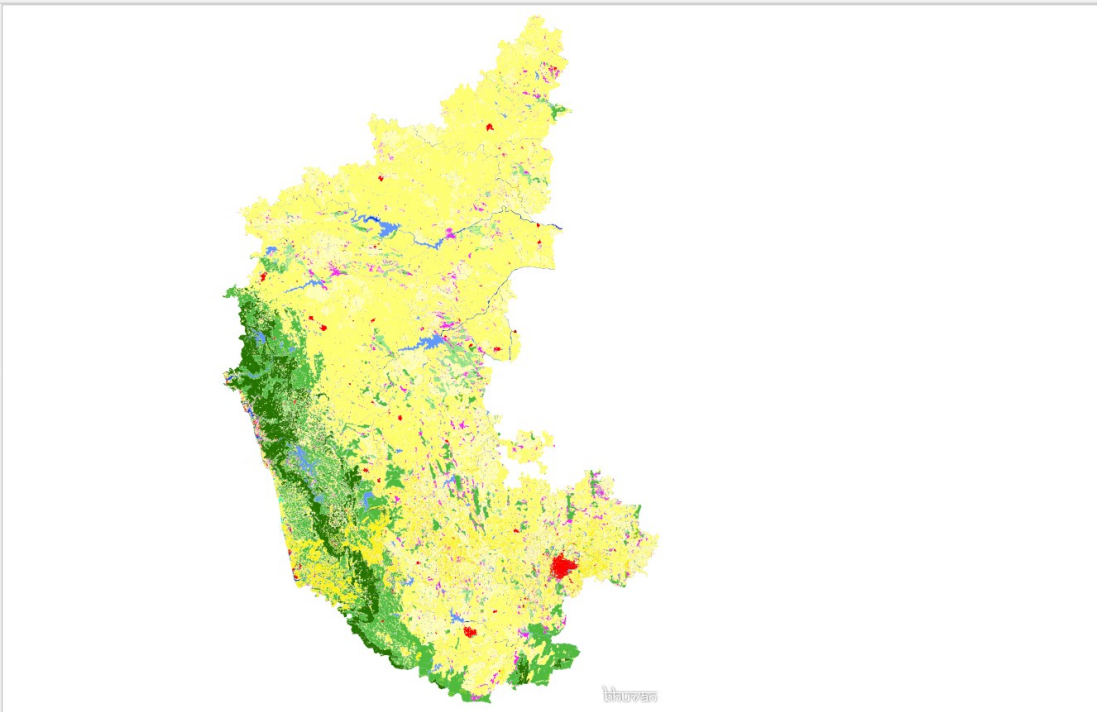
- Spatial Bookmarks
- Project Home
- Home
- C:\uluc\39\_Leela
- DRIVER
- ErDas
- Intel
- JAVAprgs
- New folder
- Oracle Database 10g Express Editi...
- PerfLogs

Layer Order Browser

Layers

uluc:KA LULC50K 0506

- Builtup,Urban
- Builtup,Rural
- Builtup,Mining
- Agriculture,Crop land
- Agriculture,Plantation
- Agriculture,Fallow
- Forest,Evergreen / Semi evergreen
- Forest,Deciduos
- Forest,Forest Plantation
- Forest,Scrub Forest
- Forest,Swamp/Mangroves
- Grass/Grazing
- Barren/unculturable/Wastelands,Salt...
- Barren/unculturable/Wastelands,Gullie...
- Barren/unculturable/Wastelands,Scru...
- Barren/unculturable/Wastelands,Sanc...
- Barren/unculturable/Wastelands,Barrr...
- Wetlands/Water Bodies,Inland Wetlan...
- Wetlands/Water Bodies,Coastal Wetla...
- Wetlands/Water Bodies,River/Stram/C...
- Wetlands/Water Bodies,Reservoir/Lak...



Processing Toolbox

Search...

- Recently used
- Cartography
- Database
- File tools
- Interpolation
- Layer tools
- Mesh
- Network analysis
- Plots
- Raster analysis
- Raster creation
- Raster terrain analysis
- Raster tools
- Vector analysis
- Vector creation
  - Array of offset (par...
  - Array of translated ...
  - Create grid
  - Create points layer ...
  - Generate points (pi...
  - Generate points (pi...
  - Import geotagged ...
  - Points to path
  - Random points alo...
  - Random points in e...
  - Random points in I...
  - Random points in ...
  - Random points insi...
  - Random points on ...
  - Raster pixels to poi...
  - Raster pixels to pol...
  - Regular points
- Vector general
- Vector geometry
- Vector overlay
- Vector selection