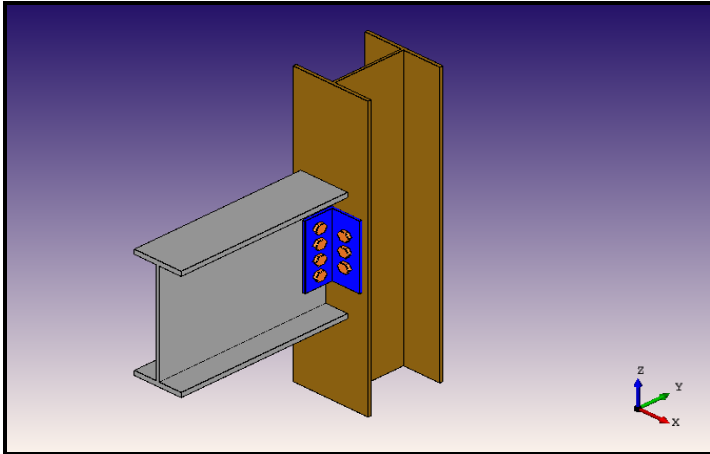


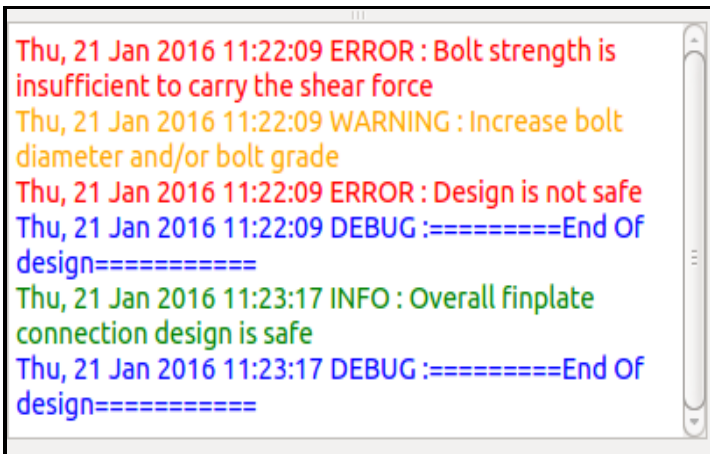
Features

◆ CAD model



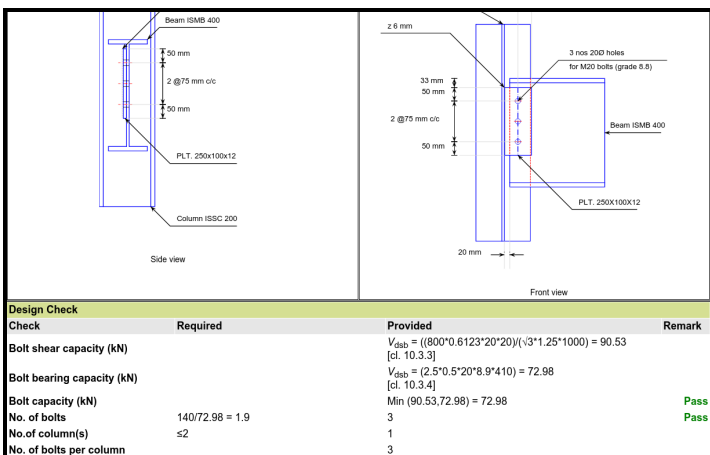
3D visualisation of the designed component in the graphics window: The 3D CAD model can be saved in different formats and easily exported to any popular CAD software (AutoCAD, Solidworks, etc.).

◆ Message log



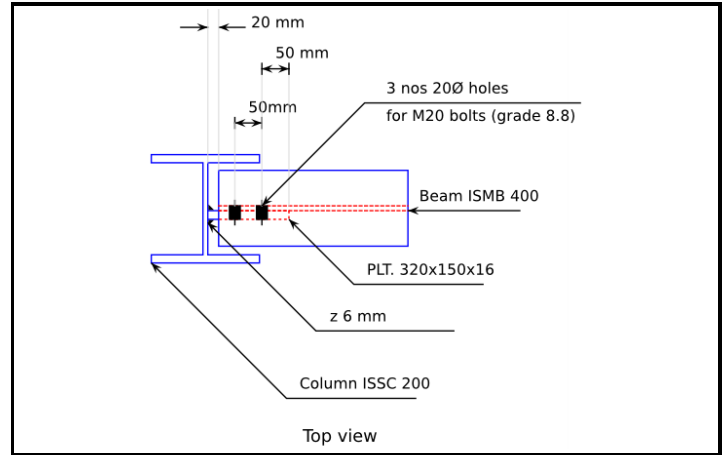
Text window for message display: This part of the GUI displays colour-coded error/warning messages and also suggests possible rectifications, that can be logged.

◆ Design report



Osdag prepares a professional design report showing all the necessary design checks as per IS 800 : 2007.

◆ Structural drawings



2D view for typical construction drawings: These vector images can be used in design reports, and also be saved in raster formats.

Project Staffs (with possible conversion to MTech or PhD):

We are Hiring

- Have you taken a course on structural steel design?
- Are you enthusiastic about coding?
- Are you well-versed with object-oriented programming (OOP)?
- Do you know Python well enough to appear for a small test?

About FOSSEE

FOSSEE (Free and Open Source Software for Education) is a project funded by the National Mission on Education through ICT, MHRD, Government of India. The FOSSEE team works on 'Adaptation and development of Open Source simulation packages equivalent to proprietary software', and is based at Indian Institute of Technology Bombay.

Other Projects

- Scilab
- Python
- Affordable Laptop
- DWSIM
- OpenFOAM
- eSim
- OR Tools
- Sandhi
- OpenModelica

<http://fossee.in>



IIT Bombay